

bs-23424R**[Primary Antibody]****AKAP14 Rabbit pAb****BioSS**
ANTIBODIES

www.bioss.com.cn

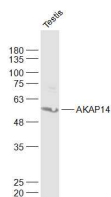
sales@bioss.com.cn

techsupport@bioss.com.cn

400-901-9800

— DATASHEET —

Host: Rabbit	Isotype: IgG	Applications: WB (1:500-2000)
Clonality: Polyclonal		Reactivity: Mouse (predicted: Rat)
GeneID: 60332	SWISS: Q35817	
Target: AKAP14		
Immunogen: KLH conjugated synthetic peptide derived from rat AKAP14: 81-180/502.		Predicted MW.: 55 kDa
Purification: affinity purified by Protein A		Subcellular Location: Cytoplasm
Concentration: 1mg/ml		
Storage: 0.01M TBS (pH7.4) with 1% BSA, 0.02% Proclin300 and 50% Glycerol. Shipped at 4°C. Store at -20°C for one year. Avoid repeated freeze/thaw cycles.		
Background: This gene encodes a member of A-kinase anchoring proteins (AKAPs), a family of functionally related proteins that target protein kinase A to discrete locations within the cell. The human ortholog of this gene has been characterized. It is reported to be enriched in airway cilia and to regulate ciliary beat frequency by anchoring the protein kinase A holoenzyme near substrates in the axoneme. [provided by RefSeq, May 2013].		

— VALIDATION IMAGES —

Sample: Testis (Mouse) Lysate at 40 ug Primary:

Anti-AKAP14 (bs-23424R) at 1/1000 dilution

Secondary: IRDye800CW Goat Anti-Rabbit IgG at

1/20000 dilution Predicted band size: 55 kD

Observed band size: 55 kD