

**bs-1032R****[ Primary Antibody ]**

**Bioss**  
ANTIBODIES

www.bioss.com.cn

sales@bioss.com.cn

techsupport@bioss.com.cn

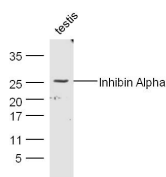
400-901-9800

## Inhibin Alpha Rabbit pAb

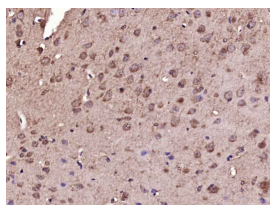
### — DATASHEET —

<b>Host:</b> Rabbit	<b>Isotype:</b> IgG	<b>Applications:</b> <b>WB</b> (1:500-2000)
<b>Clonality:</b> Polyclonal		<b>IHC-P</b> (1:100-500)
<b>GeneID:</b> 16322	<b>SWISS:</b> Q04997	<b>IHC-F</b> (1:100-500)
<b>Target:</b> Inhibin Alpha		<b>IF</b> (1:100-500)
<b>Immunogen:</b> KLH conjugated synthetic peptide derived from mouse Inhibin Alpha: 301-366/366.		<b>Reactivity:</b> Mouse, Rat (predicted: Human)
<b>Purification:</b> affinity purified by Protein A		
<b>Concentration:</b> 1mg/ml		<b>Predicted MW.:</b> 15 kDa
<b>Storage:</b> 0.01M TBS (pH7.4) with 1% BSA, 0.02% Proclin300 and 50% Glycerol. Shipped at 4°C. Store at -20°C for one year. Avoid repeated freeze/thaw cycles.		<b>Subcellular Location:</b> Secreted
<b>Background:</b> The inhibin alpha subunit joins either the beta A or beta B subunit to form a pituitary FSH secretion inhibitor. Inhibin has been shown to regulate gonadal stromal cell proliferation negatively and to have tumour-suppressor activity. In addition, serum levels of inhibin have been shown to reflect the size of granulosa-cell tumors and can therefore be used as a marker for primary as well as recurrent disease. However, in prostate cancer, expression of the inhibin alpha-subunit gene was suppressed and was not detectable in poorly differentiated tumor cells. Furthermore, because expression in gonadal and various extragonadal tissues may vary severalfold in a tissue-specific fashion, it is proposed that inhibin may be both a growth/differentiation factor and a hormone.		

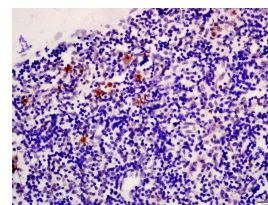
### — VALIDATION IMAGES —



Sample: Testis (Mouse) Lysate at 30 ug Primary:  
Anti- Inhibin- $\alpha$  (bs-1032R) at 1/300 dilution  
Secondary: IRDye800CW Goat Anti-Rabbit IgG at  
1/20000 dilution Predicted band size: 15 kD  
Observed band size: 25 kD



Paraformaldehyde-fixed, paraffin embedded (Mouse brain); Antigen retrieval by boiling in sodium citrate buffer (pH6.0) for 15min; Block endogenous peroxidase by 3% hydrogen peroxide for 20 minutes; Blocking buffer (normal goat serum) at 37°C for 30min; Antibody incubation with (Inhibin Alpha) Polyclonal Antibody, Unconjugated (bs-1032R) at 1:400 overnight at 4°C, followed by operating according to SP Kit(Rabbit) (sp-0023) instructions and DAB staining.



Tissue/cell: Rat lymphoid tissue; 4% Paraformaldehyde-fixed and paraffin-embedded; Antigen retrieval: citrate buffer (0.01M, pH 6.0), Boiling bathing for 15min; Block endogenous peroxidase by 3% Hydrogen peroxide for 30min; Blocking buffer (normal goat serum, C-0005) at 37°C for 20 min; Incubation: Anti-Inhibin Alpha Polyclonal Antibody, Unconjugated (bs-1032R) 1:200, overnight at 4°C, followed by conjugation to the secondary antibody (SP-0023) and DAB (C-0010) staining

### — SELECTED CITATIONS —

- **[IF=3.9]** Weipu Mao. et al. Expression and distribution of activin-follistatin-inhibin axis in the urinary bladder..Frontiers in Molecular Biosciences.2025 Mar 12;12:1519977. IF ;Mouse. 40144023