

bs-8275R

[Primary Antibody]

GPRIN1 Rabbit pAb

Bioss
ANTIBODIES

www.bioss.com.cn

sales@bioss.com.cn

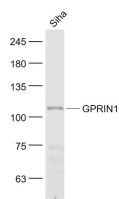
techsupport@bioss.com.cn

400-901-9800

— DATASHEET —

Host: Rabbit	Isotype: IgG	Applications: WB (1:500-2000)
Clonality: Polyclonal		Reactivity: Human
GeneID: 114787	SWISS: Q7Z2K8	
Target: GPRIN1		
Immunogen: KLH conjugated synthetic peptide derived from human GPRIN1: 101-200/1008.		Predicted MW.: 102 kDa
Purification: affinity purified by Protein A		Subcellular Location: Cell membrane
Concentration: 1mg/ml		
Storage: 0.01M TBS (pH7.4) with 1% BSA, 0.02% Proclin300 and 50% Glycerol. Shipped at 4°C. Store at -20°C for one year. Avoid repeated freeze/thaw cycles.		
Background: GPRIN1 may be involved in neurite outgrowth.		

— VALIDATION IMAGES —



Sample: SiHa(Human) Cell Lysate at 30 ug
Primary: Anti- GPRIN1 (bs-8275R) at 1/1000
dilution Secondary: IRDye800CW Goat Anti-
Rabbit IgG at 1/20000 dilution Predicted band
size: 102 kD Observed band size: 102 kD