

**bs-8271R****[ Primary Antibody ]****GIMAP5 Rabbit pAb****BioSS**  
**ANTIBODIES**

www.bioss.com.cn

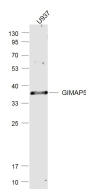
sales@bioss.com.cn

techsupport@bioss.com.cn

400-901-9800

**— DATASHEET —**

<b>Host:</b> Rabbit	<b>Isotype:</b> IgG	<b>Applications:</b> WB (1:500-2000)
<b>Clonality:</b> Polyclonal		<b>Reactivity:</b> Human
<b>GeneID:</b> 55340	<b>SWISS:</b> Q96F15	
<b>Target:</b> GIMAP5		
<b>Immunogen:</b> KLH conjugated synthetic peptide derived from human GIMAP5: 101-200/307.		<b>Predicted MW.:</b> 35 kDa
<b>Purification:</b> affinity purified by Protein A		<b>Subcellular Location:</b> Cell membrane ,Cytoplasm
<b>Concentration:</b> 1mg/ml		
<b>Storage:</b> 0.01M TBS (pH7.4) with 1% BSA, 0.02% Proclin300 and 50% Glycerol. Shipped at 4°C. Store at -20°C for one year. Avoid repeated freeze/thaw cycles.		
<b>Background:</b> GIMAP5, also known as IAN5, IAN4L1 (immunity-associated nucleotide 4-like 1 protein), IAN4, IMAP3, HIMAP3 or IROD, is a 307 amino acid single-pass type IV membrane protein of the mitochondrial outer membrane. A member of the GTP-binding superfamily and the immuno-associated nucleotide (IAN) subfamily, GIMAP5 plays a role in T-cell survival and mitochondrial integrity. GIMAP5 is highly expressed in CD4 and CD8-positive T-cells and monocytes, as well as B-lymphocyte-derived neoplasms. GIMAP5 exists as two alternatively spliced isoforms and is encoded by a gene that maps to human chromosome 7q36.1. Defects in the GIMAP5 gene are associated with systemic lupus erythematosus.		

**— VALIDATION IMAGES —**

Sample: U937 (Human) Cell Lysate at 30 ug  
Primary: Anti-GIMAP5 (bs-8271R) at 1/1000  
dilution Secondary: IRDye800CW Goat Anti-  
Rabbit IgG at 1/20000 dilution Predicted band  
size: 35 kD Observed band size: 35 kD