

bs-8237R**[Primary Antibody]****FRMD5 Rabbit pAb****Bioss**
ANTIBODIES

www.bioss.com.cn

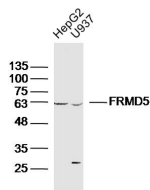
sales@bioss.com.cn

techsupport@bioss.com.cn

400-901-9800

— DATASHEET —

Host: Rabbit	Isotype: IgG	Applications: WB (1:500-2000)
Clonality: Polyclonal		Reactivity: Human (predicted: Mouse, Rat, Rabbit, Pig, Sheep, Cow, Dog, Horse)
GeneID: 84978	SWISS: Q7Z6J6	Predicted MW.: 65 kDa
Target: FRMD5		Subcellular Location: Cell membrane
Immunogen: KLH conjugated synthetic peptide derived from human FRMD5: 211-312/570.		
Purification: affinity purified by Protein A		
Concentration: 1mg/ml		
Storage: 0.01M TBS (pH7.4) with 1% BSA, 0.02% Proclin300 and 50% Glycerol. Shipped at 4°C. Store at -20°C for one year. Avoid repeated freeze/thaw cycles.		
Background: FERM domains are roughly 150 amino acids in length and are found in a number of cytoskeletal-associated proteins such as Ezrin, Radixin, Moesin and 4.1 (erythrocyte membrane protein band 4.1), where they provide a link between cytoskeletal signals and membrane dynamics. FRMD5 (FERM domain-containing protein 5) is a 570 amino acid single-pass membrane protein that contains one FERM domain and exists as two alternatively spliced isoforms. The gene encoding FRMD5 maps to human chromosome 15, which houses over 700 genes and comprises nearly 3% of the human genome. Angelman syndrome, Prader-Willi syndrome, Tay-Sachs disease and Marfan syndrome are all associated with defects in chromosome 15-localized genes.		

— VALIDATION IMAGES —

Sample: HepG2 (human) cell Lysate at 40 ug
U937 (human) cell Lysate at 40 ug
Primary: Anti-FRMD5 (bs-8237R) at 1/300 dilution
Secondary: IRDye800CW Goat Anti-Rabbit IgG at 1/20000 dilution
Predicted band size: 65 kD
Observed band size: 63 kD