

bs-24076R**[Primary Antibody]****Marapsin1/CAPH2 Rabbit pAb****BioSS**
ANTIBODIES

www.bioss.com.cn

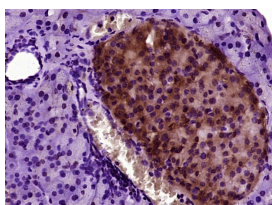
sales@bioss.com.cn

techsupport@bioss.com.cn

400-901-9800

— DATASHEET —

Host: Rabbit	Isotype: IgG	Applications: IHC-P (1:100-500) IHC-F (1:100-500) IF (1:100-500) Reactivity: Mouse (predicted: Rat, Rabbit, Horse) Predicted MW.: 28 kDa Subcellular Location: Secreted
Clonality: Polyclonal		
GeneID: 213171	SWISS: Q8BJR6	
Target: Marapsin1/CAPH2		
Immunogen: KLH conjugated synthetic peptide derived from mouse Marapsin1/CAPH2: 121-220/328.		
Purification: affinity purified by Protein A		
Concentration: 1mg/ml		
Storage: 0.01M TBS (pH7.4) with 1% BSA, 0.02% Proclin300 and 50% Glycerol. Shipped at 4°C. Store at -20°C for one year. Avoid repeated freeze/thaw cycles.		
Background: Pancreasin is a pancreatic tryptic serine peptidase that cleaves peptides after an arginine residue.[supplied by OMIM, Sep 2003]		

— VALIDATION IMAGES —

Paraformaldehyde-fixed, paraffin embedded (mouse pancreas tissue); Antigen retrieval by boiling in sodium citrate buffer (pH6.0) for 15min; Block endogenous peroxidase by 3% hydrogen peroxide for 20 minutes; Blocking buffer (normal goat serum) at 37°C for 30min; Antibody incubation with (CAPH2) Polyclonal Antibody, Unconjugated (bs-24076R) at 1:400 overnight at 4°C, followed by operating according to SP Kit(Rabbit) (sp-0023) instructions and DAB staining