

**bs-23312R****[ Primary Antibody ]****FITM2 Rabbit pAb****Bioss**  
**ANTIBODIES**

www.bioss.com.cn

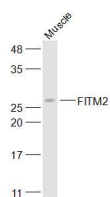
sales@bioss.com.cn

techsupport@bioss.com.cn

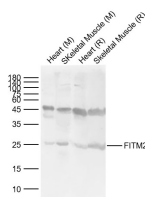
400-901-9800

**— DATASHEET —**

<b>Host:</b> Rabbit	<b>Isotype:</b> IgG	<b>Applications:</b> WB (1:500-2000)
<b>Clonality:</b> Polyclonal		<b>Reactivity:</b> Mouse, Rat (predicted: Human, Pig, Sheep, Cow, Dog)
<b>GeneID:</b> 128486	<b>SWISS:</b> Q8N6M3	<b>Predicted MW.:</b> 30 kDa
<b>Target:</b> FITM2		<b>Subcellular Location:</b> Cytoplasm
<b>Immunogen:</b> KLH conjugated synthetic peptide derived from human FITM2: 1-100/262. < Extracellular >		
<b>Purification:</b> affinity purified by Protein A		
<b>Concentration:</b> 1mg/ml		
<b>Storage:</b> 0.01M TBS (pH7.4) with 1% BSA, 0.02% Proclin300 and 50% Glycerol. Shipped at 4°C. Store at -20°C for one year. Avoid repeated freeze/thaw cycles.		
<b>Background:</b> FIT2 belongs to an evolutionarily conserved family of proteins involved in fat storage (Kadereit et al., 2008 [PubMed 18160536]).[supplied by OMIM, May 2008]		

**— VALIDATION IMAGES —**

Sample: Muscle (Mouse) Lysate at 40 ug Primary: Anti-FITM2 (bs-23312R) at 1/300 dilution  
Secondary: IRDye800CW Goat Anti-Rabbit IgG at 1/20000 dilution Predicted band size: 30 kD  
Observed band size: 28 kD



Sample: Lane 1: Mouse Heart Lysates Lane 2: Mouse Skeletal Muscle Lysates Lane 3: Rat Heart Lysates Lane 4: Rat Skeletal Muscle Lysates  
Primary: Anti-FITM2 (bs-23312R) at 1/1000 dilution Secondary: IRDye800CW Goat Anti-Rabbit IgG at 1/20000 dilution Predicted band size: 30kDa Observed band size: 25kDa

**— SELECTED CITATIONS —**

- **[IF=2.303]** Chen Y. et al. High FITM2 expression promotes cell migration ability of hepatocellular carcinoma by regulating the formation of caveolae and indicates poor patient survival.. Histol Histopathol. 2021 Oct;;18382-18382 WB ;Human. 34672358