

---

## AFP Mouse mAb

Catalog Number: bsm-43140M

Target Protein: AFP

Form: Size : 50ul/100ul/200ul

Liquid

Size : 200ug (PBS only)

Lyophilized

Note: Centrifuge tubes before opening. Reconstitute the lyophilized product in distilled water. Optimal concentration should be determined by the end user.

Host: Mouse

Clonality: Monoclonal

Clone No.: 4C12

Isotype: IgG

Applications: WB (1:500-2000)

Reactivity: Human

Predicted MW: 65 kDa

Subcellular Secreted

Locations:

Entrez Gene: 174

Swiss Prot: P02771

Purification: affinity purified by Protein A

Storage: Size : 50ul/100ul/200ul

PBS (pH7.4).

Size : 200ug (PBS only)

0.01M PBS

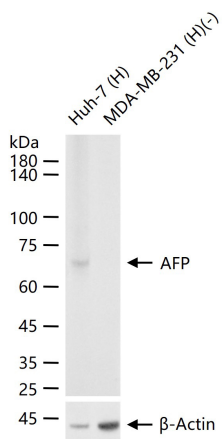
Shipped at 4°C. Store at -20°C for one year. Avoid repeated freeze/thaw cycles.

**Background:** Alpha 1 Fetoprotein is a major plasma protein produced by the yolk sac and the liver during fetal life. Alpha fetoprotein expression in adults is often associated with hepatoma or teratoma. However, hereditary persistence of alpha-fetoprotein may also be found in individuals with no obvious pathology. The protein is thought to be the fetal counterpart of serum albumin, and the alpha fetoprotein and albumin genes are present in tandem in the same transcriptional orientation on chromosome 4. Alpha fetoprotein is found in monomeric as well as dimeric and trimeric forms, and binds copper, nickel, fatty acids and bilirubin. The level of alpha fetoprotein in amniotic fluid is used to measure renal loss of

protein to screen for spina bifida and anencephaly. Expression has been documented in human adrenal, liver, ovary, testis, and pancreas. ESTs have been isolated from normal human brain, liver/spleen, embryo and uterus tissue libraries.

## VALIDATION IMAGES

---



25 ug total protein per lane of various lysates (see on figure) probed with AFP monoclonal antibody, unconjugated (bsm-43140M) at 1:1000 dilution and 4°C overnight incubation. Followed by conjugated secondary antibody incubation at r.t. for 60 min.