

bs-11209R**[Primary Antibody]****SUFU Rabbit pAb****BioSS**
ANTIBODIES

www.bioss.com.cn

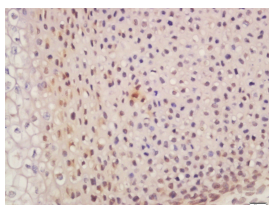
sales@bioss.com.cn

techsupport@bioss.com.cn

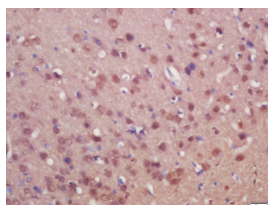
400-901-9800

— DATASHEET —

Host: Rabbit	Isotype: IgG	Applications: IHC-P (1:100-500)
Clonality: Polyclonal		IHC-F (1:100-500)
GeneID: 51684	SWISS: Q9UMX1	IF (1:100-500)
Target: SUFU		Reactivity: Mouse, Rat (predicted: Human, Pig, Chicken, Dog, Horse)
Immunogen: KLH conjugated synthetic peptide derived from human SUFU: 433-484/484.		Predicted MW.: 53/106 kDa
Purification: affinity purified by Protein A		Subcellular Location: Cytoplasm ,Nucleus
Concentration: 1mg/ml		
Storage: 0.01M TBS (pH7.4) with 1% BSA, 0.02% Proclin300 and 50% Glycerol. Shipped at 4°C. Store at -20°C for one year. Avoid repeated freeze/thaw cycles.		
Background: SUFU is a key negative regulator in the vertebrate Hedgehog signaling pathway. SUFU interacts with genes encoding proteins in this signal transduction pathway. In Drosophila, Intracellular transduction of the Hedgehog pathway involves the release of a large complex containing SUFU. SUFU inhibits the activity of the transcription factor Gli1 and interacts with Gli2, Gli3 and the serine/threonine kinase Fused. SUFU is widely expressed in adult and embryonic tissues with higher expression in tissues patterned by hedgehog signaling. The SUFU gene locus maps to a region that is deleted in glioblastomas, prostate cancer, malignant melanoma and endometrial cancer.		

— VALIDATION IMAGES —

Tissue/cell: mouse embryo tissue; 4%
Paraformaldehyde-fixed and paraffin-
embedded; Antigen retrieval: citrate buffer (0.01M, pH 6.0), Boiling bathing for 15min; Block endogenous peroxidase by 3% Hydrogen peroxide for 30min; Blocking buffer (normal goat serum, C-0005) at 37°C for 20 min; Incubation: Anti-SUFU Polyclonal Antibody, Unconjugated(bs-11209R) 1:200, overnight at 4°C, followed by conjugation to the secondary antibody(SP-0023) and DAB(C-0010) staining



Tissue/cell: rat brain tissue; 4%
Paraformaldehyde-fixed and paraffin-
embedded; Antigen retrieval: citrate buffer (0.01M, pH 6.0), Boiling bathing for 15min; Block endogenous peroxidase by 3% Hydrogen peroxide for 30min; Blocking buffer (normal goat serum, C-0005) at 37°C for 20 min; Incubation: Anti-SUFU Polyclonal Antibody, Unconjugated(bs-11209R) 1:200, overnight at 4°C, followed by conjugation to the secondary antibody(SP-0023) and DAB(C-0010) staining

— SELECTED CITATIONS —

- **[IF=0]** Liu et al. Suppressor of fused (Sufu) represses Gli1 transcription and nuclear accumulation, inhibits glioma cell proliferation, invasion and vasculogenic mimicry, improving glioma chemo-sensitivity and prognosis. (2014) Oncotarget. 5:11681-94 IF,IHC ;Human. 25373737