

bs-8680R**[Primary Antibody]****Bioss**
ANTIBODIES

www.bioss.com.cn

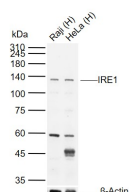
sales@bioss.com.cn

techsupport@bioss.com.cn

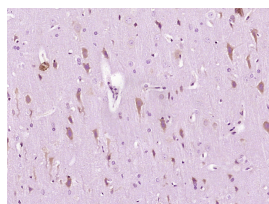
400-901-9800

IRE1 Rabbit pAb**— DATASHEET —**

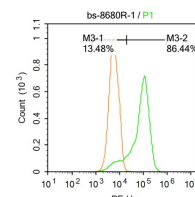
Host: Rabbit	Isotype: IgG	Applications: WB (1:500-2000)
Clonality: Polyclonal		IHC-P (1:100-500)
GeneID: 10595	SWISS: O75460	IHC-F (1:100-500)
Target: IRE1		IF (1:100-500)
Immunogen: KLH conjugated synthetic peptide derived from human IRE1a: 252-260/977.		Flow-Cyt (1 μ g/test)
Purification: affinity purified by Protein A		Reactivity: Human, Rat (predicted: Mouse, Rabbit, Pig, Cow, Dog, Horse)
Concentration: 1mg/ml		Predicted MW.: 105 kDa
Storage: 0.01M TBS (pH7.4) with 1% BSA, 0.02% Proclin300 and 50% Glycerol. Shipped at 4°C. Store at -20°C for one year. Avoid repeated freeze/thaw cycles.		Subcellular Location: Cell membrane ,Cytoplasm
Background: ERN2, endoplasmic reticulum to nucleus signaling 2, induces translational repression through 28S ribosomal RNA cleavage in response to ER stress. It is pro-apoptotic and appears to play no role in the unfolded-protein response, unlike closely related proteins.		

— VALIDATION IMAGES —

Sample: Lane 1: Human Raji cell lysates Lane 2: Human HeLa cell lysates Primary: Anti-IRE1 (bs-8680R) at 1/1000 dilution Secondary: IRDye800CW Goat Anti-Rabbit IgG at 1/20000 dilution Predicted band size: 105 kDa Observed band size: 135 kDa



Paraformaldehyde-fixed, paraffin embedded (Rat brain); Antigen retrieval by boiling in sodium citrate buffer (pH6.0) for 15min; Block endogenous peroxidase by 3% hydrogen peroxide for 20 minutes; Blocking buffer (normal goat serum) at 37°C for 30min; Antibody incubation with (IRE1) Polyclonal Antibody, Unconjugated (bs-8680R) at 1:400 overnight at 4°C, followed by operating according to SP Kit(Rabbit) (sp-0023) instructions and DAB staining.



Blank control: Raji. Primary Antibody (green line): Rabbit Anti-IRE1 antibody (bs-8680R) Dilution: 1 μ g /10⁶ cells; Isotype Control Antibody (orange line): Rabbit IgG . Secondary Antibody : Goat anti-rabbit IgG-PE Dilution: 1 μ g /test. Protocol The cells were fixed with 4% PFA (10min at room temperature) and then permeabilized with PBST for 20 min at room temperature. The cells were then incubated in 5%BSA to block non-specific protein-protein interactions for 30 min at room temperature .Cells stained with Primary Antibody for 30 min at room temperature. The secondary antibody used for 40 min at room temperature. Acquisition of 20,000 events was performed.

— SELECTED CITATIONS —

- **[IF=12.153]** Zhu, Zhenglin. et al. The natural product salicin alleviates osteoarthritis progression by binding to IRE1 α and inhibiting endoplasmic reticulum stress through the IRE1 α -I κ B α -p65 signaling pathway. EXP MOL MED. 2022 Nov;:1-13 WB ;Rat. 36357568
- **[IF=6.7]** Wenjun Zhao. et al. Zhimu-Huangbai herb-pair ameliorates hepatic steatosis in mice by regulating IRE1 α /XBP1s pathway to inhibit SREBP-1c. PHYTOMEDICINE. 2024 Sep;:156017 WB ;Mouse. 39265443
- **[IF=6.614]** Yiwei Yao. et al. CARMA3 deficiency aggravates angiotensin II-induced abdominal aortic aneurysms

Important Note: This product as supplied is intended for research use only, not for use in human, therapeutic or diagnostic applications.

development interacting between endoplasmic reticulum and mitochondria. CAN J CARDIOL. 2023 Apr;; IF, WB ;Mouse. 37030515

- **[IF=5.793]** Chunyue Wang. et al. Neuroprotective effects of verbascoside against Alzheimer' s disease via the relief of endoplasmic reticulum stress in A β -exposed U251 cells and APP/PS1 mice. J Neuroinflamm. 2020 Dec;17(1):1-16 WB ;Human. 33070776
- **[IF=6]** Dajin Pi. et al. Tanshinone IIA Inhibits the Endoplasmic Reticulum Stress-Induced Unfolded Protein Response by Activating the PPAR α /FGF21 Axis to Ameliorate Nonalcoholic Steatohepatitis. ANTIOXIDANTS-BASEL. 2024 Sep;13(9):1026 WB ;Mouse. 10.3390/antiox13091026