

bs-0445R**[Primary Antibody]****Bioss**
ANTIBODIES

www.bioss.com.cn

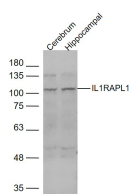
sales@bioss.com.cn

techsupport@bioss.com.cn

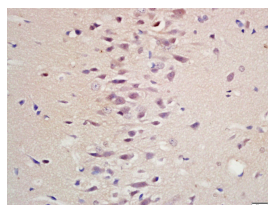
400-901-9800

IL1RAPL1 Rabbit pAb**— DATASHEET —****Host:** Rabbit**Isotype:** IgG**Clonality:** Polyclonal**GeneID:** 11141**SWISS:** Q9NZN1**Target:** IL1RAPL1**Immunogen:** KLH conjugated synthetic peptide derived from human IL1RAPL1: 301-400/696.**Purification:** affinity purified by Protein A**Concentration:** 1mg/ml**Storage:** 0.01M TBS (pH7.4) with 1% BSA, 0.02% Proclin300 and 50% Glycerol.

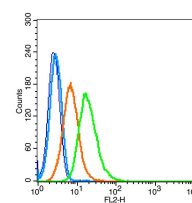
Shipped at 4°C. Store at -20°C for one year. Avoid repeated freeze/thaw cycles.

Background: The protein encoded by this gene is a member of the interleukin 1 receptor family and is similar to the interleukin 1 accessory proteins. It is most closely related to interleukin 1 receptor accessory protein-like 2 (IL1RAPL2). This gene and IL1RAPL2 are located at a region on chromosome X that is associated with X-linked non-syndromic mental retardation. Deletions and mutations in this gene were found in patients with mental retardation. This gene is expressed at a high level in post-natal brain structures involved in the hippocampal memory system, which suggests a specialized role in the physiological processes underlying memory and learning abilities.**Applications:** **WB** (1:500-2000)**IHC-P** (1:100-500)**IHC-F** (1:100-500)**IF** (1:100-500)**Flow-Cyt** (1µg/Test)**Reactivity:** Mouse, Rat
(predicted: Human, Rabbit, Pig, Cow, Chicken, Dog, GuineaPig, Horse)**Predicted MW.:** 78 kDa**Subcellular Location:** Cell membrane ,Cytoplasm**— VALIDATION IMAGES —**

Sample: Cerebrum (Mouse) Lysate at 40 ug
Hippocampal (Mouse) Lysate at 40 ug
Primary: Anti-IL1RAPL1 (bs-0445R) at 1/1000 dilution
Secondary: IRDye800CW Goat Anti-Rabbit IgG at 1/20000 dilution
Predicted band size: 78 kD
Observed band size: 108 kD



Tissue/cell: rat brain tissue; 4% Paraformaldehyde-fixed and paraffin-embedded; Antigen retrieval: citrate buffer (0.01M, pH 6.0), Boiling bathing for 15min; Block endogenous peroxidase by 3% Hydrogen peroxide for 30min; Blocking buffer (normal goat serum, C-0005) at 37°C for 20 min; Incubation: Anti-IL1RAPL1 Polyclonal Antibody, Unconjugated(bs-0445R) 1:200, overnight at 4°C, followed by conjugation to the secondary antibody(SP-0023) and DAB(C-0010) staining



Blank control: TM4(blue). Primary Antibody: Rabbit Anti-IL1RAPL1 antibody(bs-0445R), Dilution: 1µg in 100 µL 1X PBS containing 0.5% BSA; Isotype Control Antibody: Rabbit IgG (orange), used under the same conditions. Secondary Antibody: Goat anti-rabbit IgG-PE(white blue), Dilution: 1:200 in 1 X PBS containing 0.5% BSA. Protocol Primary antibody (bs-0445R, 1µg / 1x10⁶ cells) were incubated for 30 min on the ice, followed by 1 X PBS containing 0.5% BSA + 1.0% goat serum (15 min) to block non-specific protein-protein interactions. Then the Goat Anti-rabbit IgG/PE antibody was added into the blocking buffer mentioned above to react with the primary antibody at 1/200 dilution for 30 min on ice. Acquisition of 20,000 events was performed.