

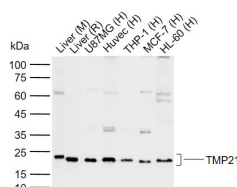
bs-11262R**[Primary Antibody]****Bioss**
ANTIBODIES

www.bioss.com.cn

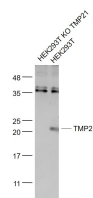
sales@bioss.com.cn

techsupport@bioss.com.cn

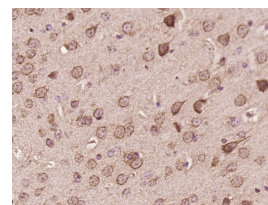
400-901-9800

TMP21 Rabbit pAb**— DATASHEET —****Host:** Rabbit**Isotype:** IgG**Clonality:** Polyclonal**GeneID:** 10972**SWISS:** P49755**Target:** TMP21**Immunogen:** KLH conjugated synthetic peptide derived from human TMP21: 101-200/219.**Purification:** affinity purified by Protein A**Concentration:** 1mg/ml**Storage:** 0.01M TBS (pH7.4) with 1% BSA, 0.02% Proclin300 and 50% Glycerol.
Shipped at 4°C. Store at -20°C for one year. Avoid repeated freeze/thaw cycles.**Background:** TMP21 is a member of the EMP24/GP25L/p24 cargo family of proteins that regulates vesicular trafficking in the early secretory pathway. TMP21 is a ubiquitously expressed single-pass type I membrane protein localizing to the Golgi cisternae and the plasma membrane. It contains one GOLD (Golgi dynamics) domain and participates in protein transport and quality control between the endoplasmic reticulum (ER) and the Golgi complex. In addition, TMP21 is a component of the heteromeric secretase complex (or Presenilin complex) and functions to regulate the γ -secretase activity. Two isoforms, namely TMP21-I and TMP21-II, exist for this protein.**Applications:** **WB** (1:500-2000)**IHC-P** (1:100-500)**IHC-F** (1:100-500)**IF** (1:100-500)**Reactivity:** Human, Mouse, Rat
(predicted: Rabbit, Cow, Chicken, Dog)**Predicted MW.:** 22 kDa**Subcellular Location:** Cell membrane ,Cytoplasm**— VALIDATION IMAGES —**

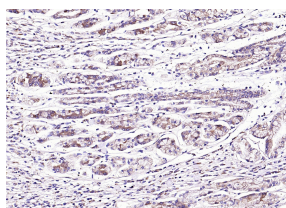
Sample: Lane 1: Mouse Liver tissue lysates Lane 2: Rat Liver tissue lysates Lane 3: Human U87MG cell lysates Lane 4: Human Huvec cell lysates Lane 5: Human THP-1 cell lysates Lane 6: Human MCF-7 cell lysates Lane 7: Human HL-60 cell lysates Primary: Anti- TMP21 (bs-11262R) at 1/1000 dilution Secondary: IRDye800CW Goat Anti-Rabbit IgG at 1/20000 dilution Predicted band size: 22 kDa Observed band size: 22 kDa



Sample: HEK293T KO TMP21(Human) Cell Lysate at 30 ug HEK293T(Human) Cell Lysate at 30 ug Primary: Anti-TMP21 (bs-11262R) at 1/1000 dilution Secondary: IRDye800CW Goat Anti-Rabbit IgG at 1/20000 dilution Predicted band size: 22 kD Observed band size: 22 kD



Paraformaldehyde-fixed, paraffin embedded (mouse brain tissue); Antigen retrieval by boiling in sodium citrate buffer (pH6.0) for 15min; Block endogenous peroxidase by 3% hydrogen peroxide for 20 minutes; Blocking buffer (normal goat serum) at 37°C for 30min; Antibody incubation with (TMP21) Polyclonal Antibody, Unconjugated (bs-11262R) at 1:400 overnight at 4°C, followed by operating according to SP Kit(Rabbit) (sp-0023) instructions and DAB staining.



Paraformaldehyde-fixed, paraffin embedded (human gastric carcinoma); Antigen retrieval by boiling in sodium citrate buffer (pH6.0) for

Important Note: This product as supplied is intended for research use only, not for use in human, therapeutic or diagnostic applications.

15min; Block endogenous peroxidase by 3% hydrogen peroxide for 20 minutes; Blocking buffer (normal goat serum) at 37°C for 30min; Antibody incubation with (TMP21) Polyclonal Antibody, Unconjugated (bs-11262R) at 1:200 overnight at 4°C, followed by operating according to SP Kit(Rabbit) (sp-0023) instructions and DAB staining.