

bs-18295R**[Primary Antibody]****DLD Rabbit pAb****BioSS**
ANTIBODIES

www.bioss.com.cn

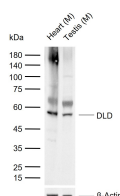
sales@bioss.com.cn

techsupport@bioss.com.cn

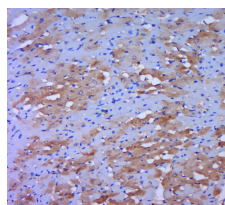
400-901-9800

— DATASHEET —

Host: Rabbit Clonality: Polyclonal GeneID: 1738 Target: DLD Immunogen: KLH conjugated synthetic peptide derived from human Lipoamide Dehydrogenase: 241-340/509. Purification: affinity purified by Protein A Concentration: 1mg/ml Storage: 0.01M TBS (pH7.4) with 1% BSA, 0.02% Proclin300 and 50% Glycerol. Shipped at 4°C. Store at -20°C for one year. Avoid repeated freeze/thaw cycles. Background: This gene encodes a member of the class-I pyridine nucleotide-disulfide oxidoreductase family. The encoded protein has been identified as a moonlighting protein based on its ability to perform mechanistically distinct functions. In homodimeric form, the encoded protein functions as a dehydrogenase and is found in several multi-enzyme complexes that regulate energy metabolism. However, as a monomer, this protein can function as a protease. Mutations in this gene have been identified in patients with E3-deficient maple syrup urine disease and lipoamide dehydrogenase deficiency. Alternative splicing results in multiple transcript variants. [provided by RefSeq, Jan 2014]	Isotype: IgG SWISS: P09622	Applications: WB (1:500-2000) IHC-P (1:100-500) IHC-F (1:100-500) IF (1:100-500) Reactivity: Mouse, Rat (predicted: Human, Sheep, Cow, Dog, Horse, Xenopus laevis) Predicted MW.: 50 kDa Subcellular Location: Cytoplasm ,Nucleus
--	---	--

— VALIDATION IMAGES —

Sample: Lane 1: Mouse Heart tissue lysates Lane 2: Mouse Testis tissue lysates Primary: Anti-DLD (bs-18295R) at 1/1000 dilution Secondary: IRDye800CW Goat Anti-Rabbit IgG at 1/20000 dilution Predicted band size: 50 kDa Observed band size: 52 kDa



Paraformaldehyde-fixed, paraffin embedded (rat heart tissue); Antigen retrieval by boiling in sodium citrate buffer (pH6.0) for 15min; Block endogenous peroxidase by 3% hydrogen peroxide for 20 minutes; Blocking buffer (normal goat serum) at 37°C for 30min; Antibody incubation with (DLDD) Polyclonal Antibody, Unconjugated (bs-18295R) at 1:400 overnight at 4°C, followed by a conjugated secondary (sp-0023) for 20 minutes and DAB staining.

— SELECTED CITATIONS —

- **[IF=2.3]** Li Xinyang. et al. Cuproptosis Related Gene DLD Associated with Poor Prognosis and Malignant Biological Characteristics in Lung Adenocarcinoma. CURR CANCER DRUG TAR. 2024 Aug;24(8):867-880 IHC ;Human. 38310466