

bs-18293R**[Primary Antibody]****Bioss**
ANTIBODIES

www.bioss.com.cn

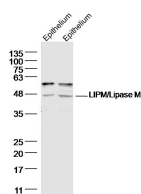
sales@bioss.com.cn

techsupport@bioss.com.cn

400-901-9800

LIPM/Lipase M Rabbit pAb**— DATASHEET —**

Host: Rabbit	Isotype: IgG	Applications: WB (1:500-2000)
Clonality: Polyclonal		
GeneID: 340654	SWISS: Q5VYY2	
Target: LIPM/Lipase M		
Immunogen: KLH conjugated synthetic peptide derived from human LIPM/Lipase M: 261-360/423.		
Purification: affinity purified by Protein A		Reactivity: Rat (predicted: Human, Mouse, Rabbit, Pig, Sheep, Cow, Dog, Horse)
Concentration: 1mg/ml		Predicted MW.: 44 kDa
Storage: 0.01M TBS (pH7.4) with 1% BSA, 0.02% Proclin300 and 50% Glycerol. Shipped at 4°C. Store at -20°C for one year. Avoid repeated freeze/thaw cycles.		Subcellular Location: Secreted
Background: Plays a highly specific role in the last step of keratinocyte differentiation. May have an essential function in lipid metabolism of the most differentiated epidermal layers.		

— VALIDATION IMAGES —

Epithelium (rat) Lysate at 40 ug Epithelium (rat)
Lysate at 40 ug Primary: Anti-LIPM/LipaseM
(bs-18293R) at 1/300 dilution Secondary:
IRDye800CW Goat Anti-Rabbit IgG at 1/20000
dilution Predicted band size: 44 kD Observed
band size: 44 kD