

bs-18288R

[Primary Antibody]

LIPC Rabbit pAb

Bioss
ANTIBODIES

www.bioss.com.cn

sales@bioss.com.cn

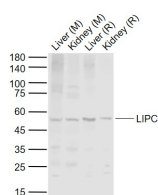
techsupport@bioss.com.cn

400-901-9800

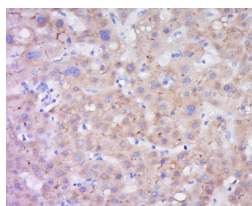
— DATASHEET —

Host: Rabbit	Isotype: IgG	Applications: WB (1:500-2000) IHC-P (1:100-500) IHC-F (1:100-500) IF (1:100-500) Reactivity: Human, Mouse, Rat (predicted: Sheep, Cow, Dog) Predicted MW.: 53 kDa Subcellular Location: Secreted ,Cell membrane ,Cytoplasm
Clonality: Polyclonal		
GeneID: 3990	SWISS: P11150	
Target: LIPC		
Immunogen: KLH conjugated synthetic peptide derived from human LIPC: 301-400/499.		
Purification: affinity purified by Protein A		
Concentration: 1mg/ml		
Storage: 0.01M TBS (pH7.4) with 1% BSA, 0.02% Proclin300 and 50% Glycerol. Shipped at 4°C. Store at -20°C for one year. Avoid repeated freeze/thaw cycles.		
Background: The primary function of this lipase is the hydrolysis of triglycerides of circulating chylomicrons and very low density lipoproteins (VLDL). Binding to heparin sulfate proteoglycans at the cell surface is vital to the function. The apolipoprotein, APOC2, acts as a coactivator of LPL activity in the presence of lipids on the luminal surface of vascular endothelium.		

— VALIDATION IMAGES —



Sample: Lane 1: Mouse Liver tissue lysates Lane 2: Mouse Kidney tissue lysates Lane 3: Rat Liver tissue lysates Lane 4: Rat Kidney tissue lysates
Primary: Anti-LIPC (bs-18288R) at 1/1000 dilution
Secondary: IRDye800CW Goat Anti-Rabbit IgG at 1/20000 dilution Predicted band size: 53 kD
Observed band size: 53 kD



Tissue/cell: human liver carcinoma; 4% Paraformaldehyde-fixed and paraffin-embedded; Antigen retrieval: citrate buffer (0.01M, pH 6.0), Boiling bathing for 15min; Block endogenous peroxidase by 3% Hydrogen peroxide for 30min; Blocking buffer (normal goat serum,C-0005) at 37°C for 20 min; Incubation: Anti-LIPC Polyclonal Antibody, Unconjugated(bs-18288R) 1:500, overnight at 4°C, followed by conjugation to the secondary antibody(SP-0023) and DAB(C-0010) staining