

EVI5L Rabbit pAb

Catalog Number: bs-14650R

Target Protein: EVI5L

Concentration: 1mg/ml

Form: Liquid

Host: Rabbit

Clonality: Polyclonal

Isotype: IgG

Applications: IHC-P (1:100-500), IHC-F (1:100-500), IF (1:100-500)

Reactivity: Rat (predicted:Human, Mouse, Rabbit, Pig, Sheep, Cow, Dog)

Predicted MW: 91 kDa

Entrez Gene: 115704

Swiss Prot: Q96CN4

Source: KLH conjugated synthetic peptide derived from human EVI5L: 701-794/794.

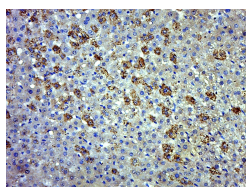
Purification: affinity purified by Protein A

Storage: 0.01M TBS (pH7.4) with 1% BSA, 0.02% Proclin300 and 50% Glycerol.

Shipped at 4°C. Store at -20°C for one year. Avoid repeated freeze/thaw cycles.

Background: EVI5L functions as a GTPase-activating protein (GAP) with a broad specificity. May interact with RAB10.

VALIDATION IMAGES



Paraformaldehyde-fixed, paraffin embedded (Rat liver); Antigen retrieval by boiling in sodium citrate buffer (pH6.0) for 15min; Block endogenous peroxidase by 3% hydrogen peroxide for 20 minutes; Blocking buffer (normal goat serum) at 37°C for 30min; Antibody incubation with (EVI5L) Polyclonal Antibody, Unconjugated (bs-14650R) at 1:500 overnight at 4°C, followed by a conjugated secondary (sp-0023) for 20 minutes and DAB staining.