

bsm-33137M**[Primary Antibody]****BioSS**
ANTIBODIES

www.bioss.com.cn

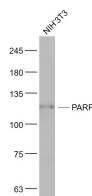
sales@bioss.com.cn

techsupport@bioss.com.cn

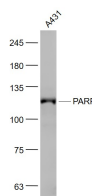
400-901-9800

PARP1 Mouse mAb**— DATASHEET —**

Host: Mouse	Isotype: IgG	Applications: WB (1:500-1000)
Clonality: Monoclonal	CloneNo.: 5B7	Reactivity: Human, Mouse
GeneID: 142	SWISS: P09874	
Target: PARP1		
Purification: affinity purified by Protein G		
Concentration: 1mg/ml		
Storage: Size : 50ul/100ul/200ul 0.01M TBS (pH7.4) with 1% BSA, 0.02% Proclin300 and 50% Glycerol. Size : 200ug (PBS only) 0.01M PBS Shipped at 4°C. Store at -20°C for one year. Avoid repeated freeze/thaw cycles.		
Background: This gene encodes a chromatin-associated enzyme, poly(ADP-ribose)transferase, which modifies various nuclear proteins by poly(ADP-ribose)ylation. The modification is dependent on DNA and is involved in the regulation of various important cellular processes such as differentiation, proliferation, and tumor transformation and also in the regulation of the molecular events involved in the recovery of cell from DNA damage. In addition, this enzyme may be the site of mutation in Fanconi anemia, and may participate in the pathophysiology of type I diabetes. [provided by RefSeq, Jul 2008].		
		Predicted MW.: 116 kDa
		Subcellular Location: Nucleus

— VALIDATION IMAGES —

Sample: NIH/3T3(Mouse) Cell Lysate at 30 ug
 Primary: Anti- PARP (bsm-33137M) at 1/1000
 dilution Secondary: IRDye800CW Goat Anti-Mouse IgG at 1/20000 dilution Predicted band size: 116 kD Observed band size: 116 kD



Sample: A431(Human) Cell Lysate at 30 ug
 Primary: Anti- PARP (bsm-33137M) at 1/1000
 dilution Secondary: IRDye800CW Goat Anti-Mouse IgG at 1/20000 dilution Predicted band size: 116 kD Observed band size: 116 kD

— SELECTED CITATIONS —

- **[IF=4.379]** Maia, Vera S. C.. et al. PLP2-derived peptide Rb4 triggers PARP-1-mediated necrotic death in murine melanoma cells. Sci Rep-Uk. 2022 Feb;12(1):1-13 WB ;Mouse. 10.1038/s41598-022-06429-8