

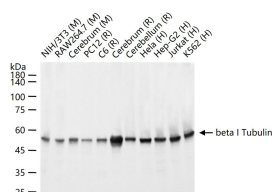
bsm-33125M**[Primary Antibody]****beta I Tubulin Mouse mAb****BioSS**
ANTIBODIES

www.bioss.com.cn

sales@bioss.com.cn

techsupport@bioss.com.cn

400-901-9800

— DATASHEET —**Host:** Mouse**Isotype:** IgG**Clonality:** Monoclonal**CloneNo.:** 1H5**GeneID:** 81027**SWISS:** Q9H4B7**Target:** beta I Tubulin**Purification:** affinity purified by Protein G**Concentration:** 1mg/ml**Storage:** 0.01M TBS (pH7.4) with 1% BSA, 0.02% Proclin300 and 50% Glycerol.
Shipped at 4°C. Store at -20°C for one year. Avoid repeated freeze/thaw cycles.**Background:** This gene encodes a member of the beta tubulin protein family. Beta tubulins are one of two core protein families (alpha and beta tubulins) that heterodimerize and assemble to form microtubules. This protein is specifically expressed in platelets and megakaryocytes and may be involved in proplatelet production and platelet release. A mutations in this gene is associated with autosomal dominant macrothrombocytopenia. Two pseudogenes of this gene are found on chromosome Y.[provided by RefSeq, Jul 2010]**Applications:** WB (1:1000-5000)**Reactivity:** Human, Mouse, Rat
(predicted: Zebrafish)**Subcellular Location:** Cytoplasm**— VALIDATION IMAGES —**

25 ug total protein per lane of various lysates
(see on figure) probed with beta I Tubulin
monoclonal antibody, unconjugated
(bsm-33125M) at 1:1000 dilution and 4°C
overnight incubation. Followed by conjugated
secondary antibody incubation at r.t. for 60 min.