

**bsm-33314M****[ Primary Antibody ]**

## Epsilon Tubulin Mouse mAb

**Bioss**  
ANTIBODIES

www.bioss.com.cn

sales@bioss.com.cn

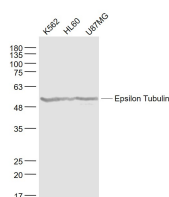
techsupport@bioss.com.cn

400-901-9800

### — DATASHEET —

<b>Host:</b> Mouse	<b>Isotype:</b> IgG	<b>Applications:</b> WB (1:500-1000)  <b>Reactivity:</b> Human, Mouse (predicted: Rat)  <b>Predicted MW.:</b> 53 kDa  <b>Subcellular Location:</b> Cytoplasm
<b>Clonality:</b> Monoclonal	<b>CloneNo.:</b> 4C3	
<b>GeneID:</b> 51175	<b>SWISS:</b> Q9UJT0	
<b>Target:</b> Epsilon Tubulin		
<b>Purification:</b> affinity purified by Protein G		
<b>Concentration:</b> 1mg/ml		
<b>Storage:</b> Size : 50ul/100ul/200ul 0.01M TBS (pH7.4) with 1% BSA, 0.02% Proclin300 and 50% Glycerol. Size : 200ug (PBS only) 0.01M PBS Shipped at 4°C. Store at -20°C for one year. Avoid repeated freeze/thaw cycles.		
<b>Background:</b> This gene encodes a member of the tubulin superfamily. This protein localizes to the centriolar sub-distal appendages that are associated with the older of the two centrioles after centrosome duplication. This protein plays a central role in organization of the microtubules during centriole duplication. A pseudogene of this gene is found on chromosome 5.[provided by RefSeq, Jan 2009]		

### — VALIDATION IMAGES —



Sample: K562(Human) Cell Lysate at 30 ug  
HL60(Human) Cell Lysate at 30 ug  
U87MG(Human) Cell Lysate at 30 ug Primary:  
Anti- Epsilon Tubulin (bsm-33314M) at 1/1000  
dilution Secondary: IRDye800CW Goat Anti-  
Mouse IgG at 1/20000 dilution Predicted band  
size: 53 kD Observed band size: 53 kD