

---

## HSP22 Mouse mAb

Catalog Number: bsm-33241M

Target Protein: HSP22

Concentration: 1mg/ml

Form: Size : 50ul/100ul/200ul

Liquid

Size : 200ug (PBS only)

Lyophilized

Note: Centrifuge tubes before opening. Reconstitute the lyophilized product in distilled water. Optimal concentration should be determined by the end user.

Host: Mouse

Clonality: Monoclonal

Clone No.: 4C3

Isotype: IgG

Applications: WB (1:500-1000), IHC-P (1:100-500), IHC-F (1:100-500), IF (1:100-500)

Reactivity: Human (predicted:Mouse, Rat)

Predicted MW: 22 kDa

Subcellular Cytoplasm ,Nucleus

Locations:

Entrez Gene: 26353

Swiss Prot: Q9UJY1

Purification: affinity purified by Protein G

Storage: Size : 50ul/100ul/200ul

0.01M TBS (pH7.4) with 1% BSA, 0.02% Proclin300 and 50% Glycerol.

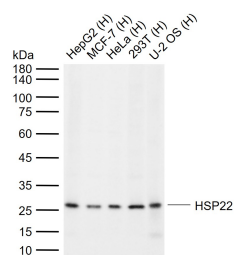
Size : 200ug (PBS only)

0.01M PBS

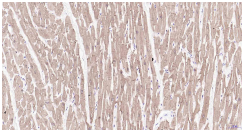
Shipped at 4°C. Store at -20°C for one year. Avoid repeated freeze/thaw cycles.

**Background:** Hsp22 (HSPB8) is a 196-amino acid protein that contains a central portion homologous to a highly conserved HSP-alpha crystallin domain common to all the small heat shock protein (HSP20) family members. Hsp22 is a monomeric protein which interacts with HSPB1. It displays temperature-dependent chaperone activity. The highest abundance of Hsp22 is in skeletal muscle, heart, and placenta. Mutations in the HSPB8 gene are associated with the inherited peripheral neuropathies, autosomal dominant distal hereditary motor neuropathy type IIA (dSMA) and axonal Charcot-Marie-Tooth disease type 2L (CMT2L).

# VALIDATION IMAGES



Sample: Lane 1: Human HepG2 cell lysates Lane 2: Human MCF-7 cell lysates Lane 3: Human HeLa cell lysates Lane 4: Human 293T cell lysates Lane 5: Human U-2 OS cell lysates Primary: Anti-HSP22 (bsm-33241M) at 1/1000 dilution Secondary: IRDye800CW Goat Anti-Mouse IgG at 1/20000 dilution Predicted band size: 22 kDa Observed band size: 26 kDa



Paraformaldehyde-fixed, paraffin embedded Human Heart; Antigen retrieval by boiling in sodium citrate buffer (pH6.0) for 15 min; Antibody incubation with HSP22 Monoclonal Antibody, Unconjugated(bsm-33241M) at 1:200 overnight at 4°C, followed by conjugation to the SP Kit (Mouse, sp-0024) and DAB (C-0010) staining.