

**bsm-33198M****[ Primary Antibody ]****CBARA1/MICU1 Mouse mAb****BioSS**  
**ANTIBODIES**

www.bioss.com.cn

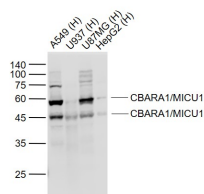
sales@bioss.com.cn

techsupport@bioss.com.cn

400-901-9800

**— DATASHEET —**

<b>Host:</b> Mouse	<b>Isotype:</b> IgG	<b>Applications:</b> WB (1:500-1000)
<b>Clonality:</b> Monoclonal	<b>CloneNo.:</b> 1H8	<b>Reactivity:</b> Human (predicted: Mouse, Rat)
<b>GeneID:</b> 10367	<b>SWISS:</b> Q9BPX6	
<b>Target:</b> CBARA1/MICU1		
<b>Purification:</b> affinity purified by Protein G		
<b>Concentration:</b> 1mg/ml		
<b>Storage:</b> Size : 50ul/100ul/200ul 0.01M TBS (pH7.4) with 1% BSA, 0.02% Proclin300 and 50% Glycerol. Size : 200ug (PBS only) 0.01M PBS Shipped at 4°C. Store at -20°C for one year. Avoid repeated freeze/thaw cycles.		<b>Predicted MW.:</b> 54 kDa
<b>Background:</b> This gene encodes an essential regulator of mitochondrial Ca2+ uptake under basal conditions. The encoded protein interacts with the mitochondrial calcium uniporter, a mitochondrial inner membrane Ca2+ channel, and is essential in preventing mitochondrial Ca2+ overload, which can cause excessive production of reactive oxygen species and cell stress. Alternatively spliced transcript variants encoding different isoforms have been described. [provided by RefSeq, Mar 2013]		<b>Subcellular Location:</b> Cytoplasm

**— VALIDATION IMAGES —**

Sample: Lane 1: A549 (Human) Cell Lysate at 30 ug  
Lane 2: U937 (Human) Cell Lysate at 30 ug  
Lane 3: U87MG (Human) Cell Lysate at 30 ug  
Lane 4: HepG2 (Human) Cell Lysate at 30 ug  
Primary: Anti- CBARA1/MICU1 (bsm-33198M) at 1/1000 dilution  
Secondary: IRDye800CW Goat Anti-Mouse IgG at 1/20000 dilution  
Predicted band size: 54/46 kD  
Observed band size: 54/46 kD