

**bsm-33168M****[ Primary Antibody ]****Flotillin-1 Mouse mAb****BioSS**  
**ANTIBODIES**

www.bioss.com.cn

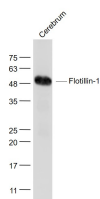
sales@bioss.com.cn

techsupport@bioss.com.cn

400-901-9800

**— DATASHEET —**

<b>Host:</b> Mouse	<b>Isotype:</b> IgG	<b>Applications:</b> WB (1:500-1000)
<b>Clonality:</b> Monoclonal	<b>CloneNo.:</b> 8D12	<b>Reactivity:</b> Mouse (predicted: Human, Rat)
<b>GeneID:</b> 10211	<b>SWISS:</b> O75955	<b>Predicted MW.:</b> 47 kDa
<b>Target:</b> Flotillin-1		<b>Subcellular Location:</b> Cell membrane
<b>Purification:</b> affinity purified by Protein G		
<b>Concentration:</b> 1mg/ml		
<b>Storage:</b> Size : 50ul/100ul/200ul 0.01M TBS (pH7.4) with 1% BSA, 0.02% Proclin300 and 50% Glycerol. Size : 200ug (PBS only) 0.01M PBS Shipped at 4°C. Store at -20°C for one year. Avoid repeated freeze/thaw cycles.		
<b>Background:</b> Caveolae are small domains on the inner cell membrane involved in vesicular trafficking and signal transduction. FLOT1 encodes a caveolae-associated, integral membrane protein. The function of flotillin 1 has not been determined. [provided by RefSeq, Jul 2008]		

**— VALIDATION IMAGES —**

Sample: Cerebrum (Mouse) Lysate at 40 ug  
Primary: Anti- Flotillin-1 (bsm-33168M) at 1/1000  
dilution Secondary: IRDye800CW Goat Anti-Mouse IgG at 1/20000 dilution Predicted band size: 47 kD Observed band size: 49 kD