

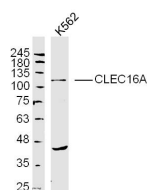
bs-18539R**[Primary Antibody]****CLEC16A Rabbit pAb****BioSS**
ANTIBODIES

www.bioss.com.cn

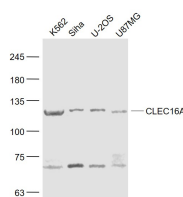
sales@bioss.com.cn

techsupport@bioss.com.cn

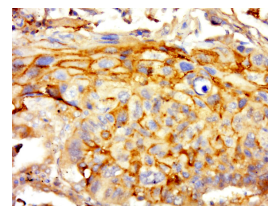
400-901-9800

— DATASHEET —**Host:** Rabbit**Isotype:** IgG**Clonality:** Polyclonal**GeneID:** 23274**SWISS:** Q2KHT3**Target:** CLEC16A**Purification:** affinity purified by Protein A**Concentration:** 1mg/ml**Storage:** 0.01M TBS (pH7.4) with 1% BSA, 0.02% Proclin300 and 50% Glycerol.
Shipped at 4°C. Store at -20°C for one year. Avoid repeated freeze/thaw cycles.**Background:** This gene encodes a member of the C-type lectin domain containing family. Single nucleotide polymorphisms in introns of this gene have been associated with diabetes mellitus, multiple sclerosis and rheumatoid arthritis. Multiple transcript variants encoding different isoforms have been found for this gene. [provided by RefSeq, Aug 2011]**Applications:** **WB** (1:500-2000)
IHC-P (1:100-500)
IHC-F (1:100-500)
IF (1:100-500)**Reactivity:** Human (predicted: Mouse, Rat, Pig, Cow)**Predicted MW.:** 118 kDa**Subcellular Location:** Cell membrane ,Cytoplasm**— VALIDATION IMAGES —**

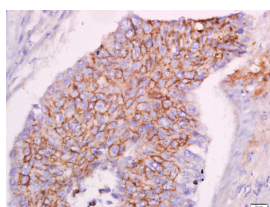
Sample: k562 (human) Cell Lysate at 40 ug
 Primary: Anti-CLEC16A(bs-18539R) at 1/300
 dilution Secondary: IRDye800CW Goat Anti-
 Rabbit IgG at 1/20000 dilution Predicted band
 size: 118 kD Observed band size: 118 kD



Sample: K562(Human) Cell Lysate at 30 ug
 SiHa(Human) Cell Lysate at 30 ug U-2OS(Human)
 Cell Lysate at 30 ug U87MG(Human) Cell Lysate
 at 30 ug Primary: Anti- CLEC16A (bs-18539R) at
 1/1000 dilution Secondary: IRDye800CW Goat
 Anti-Rabbit IgG at 1/20000 dilution Predicted
 band size: 118 kD Observed band size: 118 kD



Paraformaldehyde-fixed, paraffin embedded
 (human lung cancer); Antigen retrieval by boiling
 in sodium citrate buffer (pH6.0) for 15min; Block
 endogenous peroxidase by 3% hydrogen
 peroxide for 20 minutes; Blocking buffer (normal
 goat serum) at 37 °C for 30min; Antibody
 incubation with (CLEC16A) Polyclonal Antibody,
 Unconjugated (bs-18539R) at 1:500 overnight at
 4 °C, followed by a conjugated secondary
 (sp-0023) for 20 minutes and DAB staining.



Tissue/cell: human lung carcinoma; 4%
 Paraformaldehyde-fixed and paraffin-
 embedded; Antigen retrieval: citrate buffer (0.01M, pH 6.0), Boiling bathing for 15min; Block
 endogenous peroxidase by 3% Hydrogen
 peroxide for 30min; Blocking buffer (normal goat
 serum, C-0005) at 37 °C for 20 min; Incubation:
 Anti-CLEC16A Polyclonal Antibody,
 Unconjugated(bs-18539R) 1:500, overnight at
 4 °C, followed by conjugation to the secondary
 antibody(SP-0023) and DAB(C-0010) staining

Important Note: This product as supplied is intended for research use only, not for use in human, therapeutic or diagnostic applications.

— SELECTED CITATIONS —

- **[IF=21.2]** Atsushi Kadowaki. et al. CLEC16A in astrocytes promotes mitophagy and limits pathology in a multiple sclerosis mouse model. NATURE NEUROSCIENCE. 2025 Mar;28(3):470-486. IF ;Mouse. 40033124