

bs-7201R

[Primary Antibody]

ZNF260 Rabbit pAb

Bioss
ANTIBODIES

www.bioss.com.cn

sales@bioss.com.cn

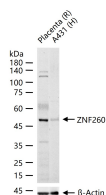
techsupport@bioss.com.cn

400-901-9800

— DATASHEET —

Host: Rabbit	Isotype: IgG	Applications: WB (1:500-2000)
Clonality: Polyclonal		
GeneID: 339324	SWISS: Q3ZCT1	
Target: ZNF260		
Immunogen: KLH conjugated synthetic peptide derived from human ZNF260: 101-200/412.		
Purification: affinity purified by Protein A		
Concentration: 1mg/ml		
Storage: 0.01M TBS (pH7.4) with 1% BSA, 0.02% Proclin300 and 50% Glycerol. Shipped at 4°C. Store at -20°C for one year. Avoid repeated freeze/thaw cycles.		
		Reactivity: Human, Rat
		Predicted MW.: 46 kDa
		Subcellular Location: Nucleus

— VALIDATION IMAGES —



25 ug total protein per lane of various lysates (see on figure) probed with ZNF260 polyclonal antibody, unconjugated (bs-7201R) at 1:1000 dilution and 4°C overnight incubation. Followed by conjugated secondary antibody incubation at r.t. for 60 min.