

**bs-20687R****[ Primary Antibody ]****ROR alpha Rabbit pAb****BioSS**  
**ANTIBODIES**

www.bioss.com.cn

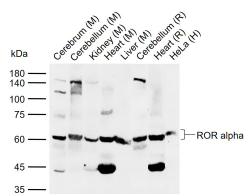
sales@bioss.com.cn

techsupport@bioss.com.cn

400-901-9800

**— DATASHEET —**

<b>Host:</b> Rabbit	<b>Isotype:</b> IgG	<b>Applications:</b> <b>WB</b> (1:500-1000)
<b>Clonality:</b> Polyclonal		<b>IHC-P</b> (1:100-500)
<b>GeneID:</b> 6095	<b>SWISS:</b> P35398	<b>IHC-F</b> (1:100-500)
<b>Target:</b> ROR alpha		<b>IF</b> (1:100-500)
<b>Immunogen:</b> KLH conjugated synthetic peptide derived from human ROR alpha: 321-420/523.		<b>Reactivity:</b> Human, Mouse, Rat
<b>Purification:</b> affinity purified by Protein A		
<b>Concentration:</b> 1mg/ml		<b>Predicted MW.:</b> 59 kDa
<b>Storage:</b> 0.01M TBS (pH7.4) with 1% BSA, 0.02% Proclin300 and 50% Glycerol. Shipped at 4°C. Store at -20°C for one year. Avoid repeated freeze/thaw cycles.		<b>Subcellular Location:</b> Nucleus
<b>Background:</b> The protein encoded by this gene is a member of the NR1 subfamily of nuclear hormone receptors. It can bind as a monomer or as a homodimer to hormone response elements upstream of several genes to enhance the expression of those genes. The encoded protein has been shown to interact with NM23-2, a nucleoside diphosphate kinase involved in organogenesis and differentiation, as well as with NM23-1, the product of a tumor metastasis suppressor candidate gene. Also, it has been shown to aid in the transcriptional regulation of some genes involved in circadian rhythm. Four transcript variants encoding different isoforms have been described for this gene. [provided by RefSeq, Feb 2014]		

**— VALIDATION IMAGES —**

Sample: Lane 1: Mouse Cerebrum tissue lysates  
Lane 2: Mouse Cerebellum tissue lysates Lane 3:  
Mouse Kidney tissue lysates Lane 4: Mouse Heart  
tissue lysates Lane 5: Mouse Liver tissue lysates  
Lane 6: Rat Cerebellum tissue lysates Lane 7: Rat  
Heart tissue lysates Lane 8: Human HeLa cell  
lysates Primary: Anti-ROR alpha (bs-20687R) at  
1/1000 dilution Secondary: IRDye800CW Goat  
Anti-Rabbit IgG at 1/20000 dilution Predicted  
band size: 59 kDa Observed band size: 60 kDa