

bs-8215R**[Primary Antibody]****FAM13C1 Rabbit pAb****Bioss**
ANTIBODIES

www.bioss.com.cn

sales@bioss.com.cn

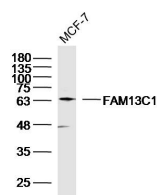
techsupport@bioss.com.cn

400-901-9800

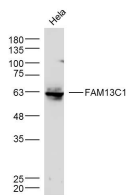
— DATASHEET —**Host:** Rabbit**Isotype:** IgG**Clonality:** Polyclonal**GeneID:** 220965**SWISS:** Q8NE31**Target:** FAM13C1**Immunogen:** KLH conjugated synthetic peptide derived from human FAM13C1: 51-150/585.**Purification:** affinity purified by Protein A**Concentration:** 1mg/ml**Storage:** 0.01M TBS (pH7.4) with 1% BSA, 0.02% Proclin300 and 50% Glycerol.

Shipped at 4°C. Store at -20°C for one year. Avoid repeated freeze/thaw cycles.

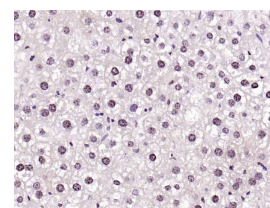
Background: FAM13C1, also known as FAM13C, is a 585 amino acid protein that belongs to the FAM13 family. Existing as three alternatively spliced isoforms, the gene encoding FAM13C1 maps to human chromosome 10, which contains over 800 genes, 135 million nucleotides and makes up nearly 4.5% of the human genome. PTEN is an important tumor suppressor gene located on chromosome 10 and, when defective, causes a genetic predisposition to cancer development known as Cowden syndrome. The chromosome 10 encoded gene ERCC6 is important for DNA repair and is linked to Cockayne syndrome which is characterized by extreme photosensitivity and premature aging. Tetrahydrobiopterin deficiency and a number of syndromes involving defective skull and facial bone fusion are also linked to chromosome 10. As with most trisomies, trisomy 10 is rare and is deleterious.

Applications: **WB** (1:500-2000)**IHC-P** (1:100-500)**IHC-F** (1:100-500)**IF** (1:100-500)**Reactivity:** Human, Mouse, Rat
(predicted: Rabbit, Pig, Sheep, Horse)**Predicted MW.:** 66 kDa**Subcellular Location:** Cell membrane ,Cytoplasm ,Nucleus**— VALIDATION IMAGES —**

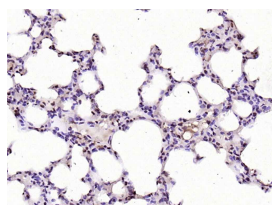
Sample: MCF-7 Cell (Human) Lysate at 40 ug
Primary: Anti-FAM13C1 (bs-8215R) at 1/300 dilution
Secondary: IRDye800CW Goat Anti-Rabbit IgG at 1/20000 dilution
Predicted band size: 66 kD Observed band size: 66 kD



Sample: HeLa Cell (Human) Lysate at 30 ug
Primary: Anti-FAM13C1 (bs-8215R) at 1/300 dilution
Secondary: IRDye800CW Goat Anti-Rabbit IgG at 1/20000 dilution
Predicted band size: 66 kD Observed band size: 63 kD



Paraformaldehyde-fixed, paraffin embedded (mouse liver); Antigen retrieval by boiling in sodium citrate buffer (pH6.0) for 15min; Block endogenous peroxidase by 3% hydrogen peroxide for 20 minutes; Blocking buffer (normal goat serum) at 37°C for 30min; Antibody incubation with (FAM13C1) Polyclonal Antibody, Unconjugated (bs-8215R) at 1:200 overnight at 4°C, followed by operating according to SP Kit(Rabbit) (sp-0023) instructions and DAB staining.



Important Note: This product as supplied is intended for research use only, not for use in human, therapeutic or diagnostic applications.

Paraformaldehyde-fixed, paraffin embedded (rat lung); Antigen retrieval by boiling in sodium citrate buffer (pH6.0) for 15min; Block endogenous peroxidase by 3% hydrogen peroxide for 20 minutes; Blocking buffer (normal goat serum) at 37°C for 30min; Antibody incubation with (FAM13C1) Polyclonal Antibody, Unconjugated (bs-8215R) at 1:200 overnight at 4°C, followed by operating according to SP Kit(Rabbit) (sp-0023) instructions and DAB staining.