

bs-6472R**[Primary Antibody]**

Phospholipase C beta 2 Rabbit pAb

Bioss
ANTIBODIES

www.bioss.com.cn

sales@bioss.com.cn

techsupport@bioss.com.cn

400-901-9800

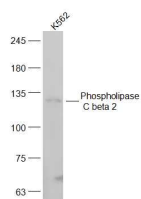
— DATASHEET —

Host: Rabbit**Isotype:** IgG**Clonality:** Polyclonal**GeneID:** 5330**SWISS:** Q00722**Target:** Phospholipase C beta 2**Immunogen:** KLH conjugated synthetic peptide derived from human Phospholipase C beta 2: 401-500/1185.**Purification:** affinity purified by Protein A**Concentration:** 1mg/ml**Storage:** 0.01M TBS (pH7.4) with 1% BSA, 0.02% Proclin300 and 50% Glycerol.

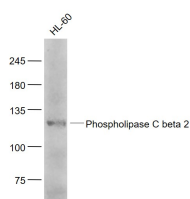
Shipped at 4°C. Store at -20°C for one year. Avoid repeated freeze/thaw cycles.

Background: The production of the second messenger molecules diacylglycerol (DAG) and inositol 1,4,5-trisphosphate (IP3) is mediated by activated phosphatidylinositol-specific phospholipase C enzymes.**Applications:** **WB** (1:500-2000)**IHC-P** (1:100-500)**IHC-F** (1:100-500)**IF** (1:50-200)**Flow-Cyt** (1µg/Test)**Reactivity:** Human, Mouse
(predicted: Rat, Rabbit, Pig,
Cow, Dog, Horse)**Predicted
MW.:** 130 kDa**Subcellular
Location:** Cytoplasm

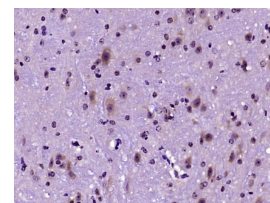
— VALIDATION IMAGES —



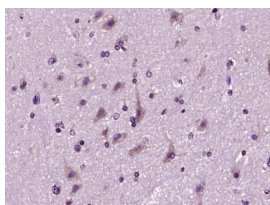
Sample: K562(Human) Cell Lysate at 30 ug
 Primary: Anti-Phospholipase C beta 2 (bs-6472R)
 at 1/300 dilution Secondary: IRDye800CW Goat
 Anti-Rabbit IgG at 1/20000 dilution Predicted
 band size: 130 kD Observed band size: 130 kD



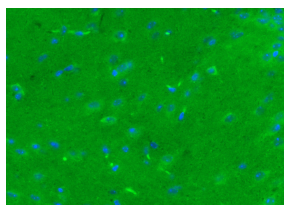
Sample: HL-60(Human) Cell Lysate at 30 ug
 Primary: Anti- Phospholipase C beta 2 (bs-6472R)
 at 1/1000 dilution Secondary: IRDye800CW Goat
 Anti-Rabbit IgG at 1/20000 dilution Predicted
 band size: 130 kD Observed band size: 130 kD



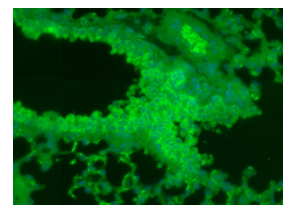
Paraformaldehyde-fixed, paraffin embedded
 (mouse brain tissue); Antigen retrieval by boiling
 in sodium citrate buffer (pH6.0) for 15min; Block
 endogenous peroxidase by 3% hydrogen
 peroxide for 20 minutes; Blocking buffer (normal
 goat serum) at 37°C for 30min; Antibody
 incubation with (PLCB2) Polyclonal Antibody,
 Unconjugated (bs-6472R) at 1:400 overnight at
 4°C, followed by operating according to SP
 Kit(Rabbit) (sp-0023) instructions and DAB
 staining.



Paraformaldehyde-fixed, paraffin embedded
 (human brain glioma); Antigen retrieval by
 boiling in sodium citrate buffer (pH6.0) for
 15min; Block endogenous peroxidase by 3%
 hydrogen peroxide for 20 minutes; Blocking
 buffer (normal goat serum) at 37°C for 30min;
 Antibody incubation with (PLCB2) Polyclonal
 Antibody, Unconjugated (bs-6472R) at 1:400
 overnight at 4°C, followed by operating
 according to SP Kit(Rabbit) (sp-0023)
 instructions and DAB staining.



Paraformaldehyde-fixed, paraffin embedded
 (Mouse brain); Antigen retrieval by boiling in
 sodium citrate buffer (pH6.0) for 15min; Block
 endogenous peroxidase by 3% hydrogen
 peroxide for 20 minutes; Blocking buffer (normal
 goat serum) at 37°C for 30min; Antibody
 incubation with (Phospholipase C beta 2)
 Polyclonal Antibody, Unconjugated (bs-6472R)
 at 1:400 overnight at 4°C, followed by a
 conjugated Goat Anti-Rabbit IgG antibody
 (bs-0295G-FITC) for 90 minutes, and DAPI for

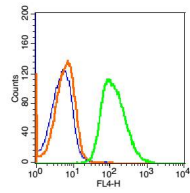


Paraformaldehyde-fixed, paraffin embedded
 (Mouse lung); Antigen retrieval by boiling in
 sodium citrate buffer (pH6.0) for 15min; Block
 endogenous peroxidase by 3% hydrogen
 peroxide for 20 minutes; Blocking buffer (normal
 goat serum) at 37°C for 30min; Antibody
 incubation with (Phospholipase C beta 2)
 Polyclonal Antibody, Unconjugated (bs-6472R)
 at 1:400 overnight at 4°C, followed by a
 conjugated Goat Anti-Rabbit IgG antibody
 (bs-0295G-FITC) for 90 minutes, and DAPI for

Important Note: This product as supplied is intended for research use only, not for use in human, therapeutic or diagnostic applications.

nuclei staining.

nuclei staining.



Blank control: Hela Cells(fixed with 2% paraformaldehyde (10 min) and then permeabilized with ice-cold 90% methanol for 30 min on ice). Primary Antibody: Rabbit Anti-Phospholipase C beta 2/AF647 Conjugated antibody (bs-6472R-AF647), Dilution: 1 μ g in 100 μ L 1X PBS containing 0.5% BSA; Isotype Control Antibody: Rabbit IgG/AF647(orange) ,used under the same conditions.