

**bs-14641R**

**[ Primary Antibody ]**

## ETS2.3 Rabbit pAb

**Bioss**  
ANTIBODIES

www.bioss.com.cn

sales@bioss.com.cn

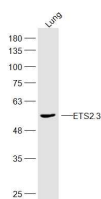
techsupport@bioss.com.cn

400-901-9800

### — DATASHEET —

<b>Host:</b> Rabbit	<b>Isotype:</b> IgG	<b>Applications:</b> WB (1:500-2000)
<b>Clonality:</b> Polyclonal		<b>Reactivity:</b> Mouse, Rat (predicted: Human, Pig, Dog, GuineaPig, Horse)
<b>GeneID:</b> 2114	<b>SWISS:</b> P15036	
<b>Target:</b> ETS2.3		<b>Predicted MW.:</b> 55 kDa
<b>Immunogen:</b> KLH conjugated synthetic peptide derived from human ETS2.3: 301-400/469.		<b>Subcellular Location:</b> Nucleus
<b>Purification:</b> affinity purified by Protein A		
<b>Concentration:</b> 1mg/ml		
<b>Storage:</b> 0.01M TBS (pH7.4) with 1% BSA, 0.02% Proclin300 and 50% Glycerol. Shipped at 4°C. Store at -20°C for one year. Avoid repeated freeze/thaw cycles.		
<b>Background:</b> This gene encodes a transcription factor which regulates genes involved in development and apoptosis. The encoded protein is also a protooncogene and shown to be involved in regulation of telomerase. A pseudogene of this gene is located on the X chromosome. Alternative splicing results in multiple transcript variants. [provided by RefSeq, Jan 2012]		

### — VALIDATION IMAGES —



Sample: Lung (Mouse) Lysate at 40 ug Primary:  
Anti-ETS2.3 (bs-14641R) at 1/300 dilution  
Secondary: IRDye800CW Goat Anti-Rabbit IgG at  
1/20000 dilution Predicted band size: 55 kD  
Observed band size: 55 kD