

**bs-18526R**

**[ Primary Antibody ]**

## ZFP14 Rabbit pAb

**BioSS**  
ANTIBODIES

www.bioss.com.cn

sales@bioss.com.cn

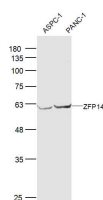
techsupport@bioss.com.cn

400-901-9800

### — DATASHEET —

<b>Host:</b> Rabbit	<b>Isotype:</b> IgG	<b>Applications:</b> WB (1:500-2000)
<b>Clonality:</b> Polyclonal		
<b>GeneID:</b> 57677	<b>SWISS:</b> Q9HCL3	
<b>Target:</b> ZFP14		
<b>Immunogen:</b> KLH conjugated synthetic peptide derived from human ZFP14: 121-220/533.		
<b>Purification:</b> affinity purified by Protein A		<b>Reactivity:</b> Human (predicted: Mouse)
<b>Concentration:</b> 1mg/ml		
<b>Storage:</b> 0.01M TBS (pH7.4) with 1% BSA, 0.02% Proclin300 and 50% Glycerol. Shipped at 4°C. Store at -20°C for one year. Avoid repeated freeze/thaw cycles.		<b>Predicted MW.:</b> 63 kDa
<b>Background:</b> ZFP14 (zinc finger protein 14 homolog) is a 533 amino acid protein that localizes to the nucleus and is composed of 13 C2H2-type zinc fingers and a KRAB domain. ZFP14 is encoded by a gene located on human chromosome 19, which consists of over 63 million bases, houses approximately 1,400 genes and is recognized for having the greatest gene density of the human chromosomes. It is the genetic home for a number of immunoglobulin (Ig) superfamily members, including the killer cell and leukocyte Ig-like receptors, a number of ICAMs, the CEACAM and PSG families, and Fc receptors (FcRs).		<b>Subcellular Location:</b> Nucleus

### — VALIDATION IMAGES —



Sample: ASPC-1(Human) Cell Lysate at 40 ug  
PANC-1(Human) Cell Lysate at 40 ug Primary:  
Anti-ZFP14 (bs-18526R) at 1/300 dilution  
Secondary: IRDye800CW Goat Anti-Rabbit IgG at  
1/20000 dilution Predicted band size: 63 kD  
Observed band size: 63 kD