

**bs-14630R****[ Primary Antibody ]****Bioss**  
ANTIBODIES

www.bioss.com.cn

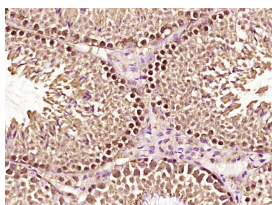
sales@bioss.com.cn

techsupport@bioss.com.cn

400-901-9800

**ERRFI1 Rabbit pAb****— DATASHEET —**

<b>Host:</b> Rabbit	<b>Isotype:</b> IgG	<b>Applications:</b> IHC-P (1:100-500) IHC-F (1:100-500) IF (1:100-500)  <b>Reactivity:</b> Mouse (predicted: Human, Rat, Sheep, Cow, Dog)  <b>Predicted MW.:</b> 51 kDa  <b>Subcellular Location:</b> Cell membrane ,Cytoplasm ,Nucleus
<b>Clonality:</b> Polyclonal		
<b>GeneID:</b> 54206	<b>SWISS:</b> Q9UJM3	
<b>Target:</b> ERRFI1		
<b>Immunogen:</b> KLH conjugated synthetic peptide derived from human ERRFI1: 201-300/462.		
<b>Purification:</b> affinity purified by Protein A		
<b>Concentration:</b> 1mg/ml		
<b>Storage:</b> 0.01M TBS (pH7.4) with 1% BSA, 0.02% Proclin300 and 50% Glycerol. Shipped at 4°C. Store at -20°C for one year. Avoid repeated freeze/thaw cycles.		
<b>Background:</b> ERRFI1 belongs to a class of mammalian regulators of tyrosine kinase signalling, whose expression is transcriptionally controlled by receptor activation. A number of features reveal this protein as a candidate for being a signal transducing protein; proline rich sequences, consensus sequences for phosphorylation of ERK1 and ERK2, a potential binding site for 14-3-3 proteins and other potential sites for phosphorylation by protein kinase C, A and Casein kinase II.		

**— VALIDATION IMAGES —**

Paraformaldehyde-fixed, paraffin embedded (Mouse testis); Antigen retrieval by boiling in sodium citrate buffer (pH6.0) for 15min; Block endogenous peroxidase by 3% hydrogen peroxide for 20 minutes; Blocking buffer (normal goat serum) at 37°C for 30min; Antibody incubation with (ERRFI1) Polyclonal Antibody, Unconjugated (bs-14630R) at 1:400 overnight at 4°C, followed by operating according to SP Kit(Rabbit) (sp-0023) instructions and DAB staining.