

bs-4314R**[Primary Antibody]****Bioss**
ANTIBODIES

www.bioss.com.cn

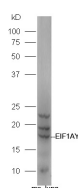
sales@bioss.com.cn

techsupport@bioss.com.cn

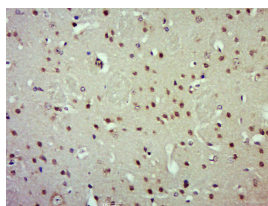
400-901-9800

EIF1AY Rabbit pAb**— DATASHEET —**

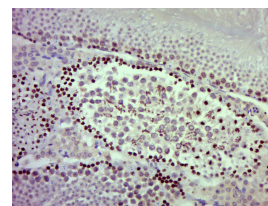
Host: Rabbit Clonality: Polyclonal GeneID: 9086 Target: EIF1AY Immunogen: KLH conjugated synthetic peptide derived from human EIF1AY: 21-120/144. Purification: affinity purified by Protein A Concentration: 1mg/ml Storage: 0.01M TBS (pH7.4) with 1% BSA, 0.02% Proclin300 and 50% Glycerol. Shipped at 4°C. Store at -20°C for one year. Avoid repeated freeze/thaw cycles. Background: This gene is located on the non-recombining region of the Y chromosome. It encodes a protein related to eukaryotic translation initiation factor 1A (EIF1A), which may function in stabilizing the binding of the initiator Met-tRNA to 40S ribosomal subunits. Alternative splicing results in multiple transcript variants. [provided by RefSeq, Jul 2013]	Isotype: IgG SWISS: O14602	Applications: WB (1:500-2000) IHC-P (1:100-500) IHC-F (1:100-500) IF (1:100-500) Reactivity: Mouse (predicted: Human, Rat, Cow) Predicted MW.: 16 kDa Subcellular Location: Nucleus
----------------------------------------------------------------------------------------------------------------------------------------------------------------------------------------------------------------------------------------------------------------------------------------------------------------------------------------------------------------------------------------------------------------------------------------------------------------------------------------------------------------------------------------------------------------------------------------------------------------------------------------------------------------------------------------------------------------------------------------------------------------------------------------------------------------------------------------------------	-------------------------------------------------	---------------------------------------------------------------------------------------------------------------------------------------------------------------------------------------------------------------------------------------------------------------------------

— VALIDATION IMAGES —

Sample: Lung (Mouse) Lysate at 40 ug Primary:
Anti-EIF1AY (bs-4314R) at 1/300 dilution
Secondary: IRDye800CW Goat Anti-Rabbit IgG at
1/20000 dilution Predicted band size: 16 kD
Observed band size: 18 kD



Paraformaldehyde-fixed, paraffin embedded
(Mouse brain); Antigen retrieval by boiling in
sodium citrate buffer (pH6.0) for 15min; Block
endogenous peroxidase by 3% hydrogen
peroxide for 20 minutes; Blocking buffer (normal
goat serum) at 37°C for 30min; Antibody
incubation with (EIF1AY) Polyclonal Antibody,
Unconjugated (bs-4314R) at 1:500 overnight at
4°C, followed by a conjugated secondary
(sp-0023) for 20 minutes and DAB staining.



Paraformaldehyde-fixed, paraffin embedded
(Mouse testis); Antigen retrieval by boiling in
sodium citrate buffer (pH6.0) for 15min; Block
endogenous peroxidase by 3% hydrogen
peroxide for 20 minutes; Blocking buffer (normal
goat serum) at 37°C for 30min; Antibody
incubation with (EIF1AY) Polyclonal Antibody,
Unconjugated (bs-4314R) at 1:500 overnight at
4°C, followed by a conjugated secondary
(sp-0023) for 20 minutes and DAB staining.

— SELECTED CITATIONS —

- **[IF=4.243]** Rongxin Geng. et al. EIF1A depletion restrains human pituitary adenoma progression. Transl Oncol. 2022 Jan;15:101299 WB,IHC ;Human,Mouse. 34864402