

bs-10472R**[Primary Antibody]****TLR2 Rabbit pAb****Bioss**
ANTIBODIES

www.bioss.com.cn

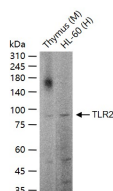
sales@bioss.com.cn

techsupport@bioss.com.cn

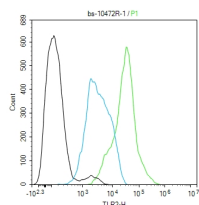
400-901-9800

— DATASHEET —

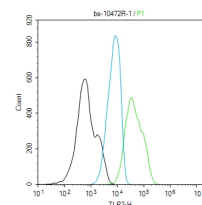
Host: Rabbit	Isotype: IgG	Applications: WB (1:500-2000) Flow-Cyt (1ug/Test)
Clonality: Polyclonal		Reactivity: Human, Mouse
GeneID: 7097	SWISS: O60603	
Target: TLR2		
Immunogen: KLH conjugated synthetic peptide derived from human TLR2: 301-400/784. < Extracellular >		
Purification: affinity purified by Protein A		
Concentration: 1mg/ml		
Storage: 0.01M TBS (pH7.4) with 1% BSA, 0.02% Proclin300 and 50% Glycerol. Shipped at 4°C. Store at -20°C for one year. Avoid repeated freeze/thaw cycles.		
Background: The protein encoded by this gene is a member of the Toll-like receptor (TLR) family which plays a fundamental role in pathogen recognition and activation of innate immunity. TLRs are highly conserved from Drosophila to humans and share structural and functional similarities. They recognize pathogen-associated molecular patterns (PAMPs) that are expressed on infectious agents, and mediate the production of cytokines necessary for the development of effective immunity. The various TLRs exhibit different patterns of expression. This gene is expressed most abundantly in peripheral blood leukocytes, and mediates host response to Gram-positive bacteria and yeast via stimulation of NF-kappaB. [provided by RefSeq, Jul 2008].		
		Predicted MW.: 84 kDa
		Subcellular Location: Cell membrane

— VALIDATION IMAGES —

25 ug total protein per lane of various lysates (see on figure) probed with TLR2 polyclonal antibody, unconjugated (bs-10472R) at 1:1000 dilution and 4°C overnight incubation. Followed by conjugated secondary antibody incubation at r.t. for 60 min.



The THP-1 (H) cells were fixed with 4% PFA (10 min at r.t.) and then permeabilized with 90% ice-cold methanol for 20 min at -20°C, the cells then were incubated in 5% BSA to block non-specific protein-protein interactions (30 min at r.t.). Primary Antibody (green): Rabbit Anti-TLR2 antibody (bs-10472R): 1 µg/10⁶ cells; Secondary Antibody (white blue): Goat anti-Rabbit IgG-BF488 (bs-60295G-BF488): 1 µg/test. Blank control (black): PBS. Acquisition of 20,000 events was performed.



The Raw264.7 (M) cells were fixed with 4% PFA (10 min at r.t.) and then permeabilized with 90% ice-cold methanol for 20 min at -20°C, the cells then were incubated in 5% BSA to block non-specific protein-protein interactions (30 min at r.t.). Primary Antibody (green): Rabbit Anti-TLR2 antibody (bs-10472R): 1 µg/10⁶ cells; Secondary Antibody (white blue): Goat anti-Rabbit IgG-BF488 (bs-60295G-BF488): 1 µg/test. Blank control (black): PBS. Acquisition of 20,000 events was performed.

— SELECTED CITATIONS —

- **[IF=4.6]** Wang, Shaolan, et al. "Xenobiotic Pregnane X Receptor (PXR) Regulates Innate Immunity via Activation of NLRP3 Inflammasome in Vascular Endothelial Cells." *Journal of Biological Chemistry* 289.43 (2014): 30075-30081. ELISA ;Human. 25202020
- **[IF=4.582]** Silvestro Ennio D'Anna, et al. Bacterial load and related innate immune response in the bronchi of rapid

decliners with chronic obstructive pulmonary disease. RESP MED. 2023 Aug;215:107297 IHC ;Human. 37245650

- **[IF=3.88]** Fu, Juanli, et al. "Tetrachlorobenzoquinone exerts neurological pro-inflammatory activity by promoting HMGB1 release, which induces TLR4 clustering within the lipid raft." Toxicological Sciences (2016): kfw124. WB,ICC ;Rat. 27413111
- **[IF=4.3]** Ni Shuangfei. et al. METTL3 promotes nucleus pulposus cell senescence in intervertebral disc degeneration by regulating TLR2 m6A methylation and gut microbiota. J GERONTOL A-BIOL. 2024 Jun;; IF ;Rat. 38853707
- **[IF=2.76]** Wang, Jihong, et al. "Toll-Like Receptor 2 Deficiency Shifts PrP106-126-Induced Microglial Activation from a Neurotoxic to a Neuroprotective Phenotype." Journal of Molecular Neuroscience (2014): 1-11. WB ;Mouse. 25330861