

bsm-52290R**[Primary Antibody]****Bioss**
ANTIBODIES

www.bioss.com.cn

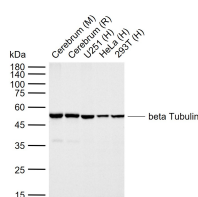
sales@bioss.com.cn

techsupport@bioss.com.cn

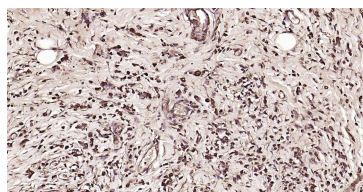
400-901-9800

beta Tubulin Recombinant Rabbit mAb**— DATASHEET —**

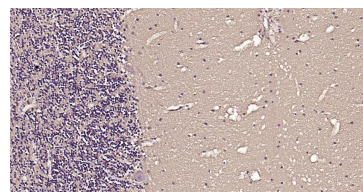
Host: Rabbit	Isotype: IgG	Applications: WB (1:2000-5000) IHC-P (1:50-200) IHC-F (1:50-200) IF (1:50-200) Reactivity: Human, Mouse, Rat Predicted MW.: 50 kDa Subcellular Location: Cytoplasm
Clonality: Recombinant	CloneNo.: 2F11	
GeneID: 203068	SWISS: P07437	
Target: beta Tubulin		
Immunogen: A synthesized peptide derived from human beta Tubulin: 400-444.		
Purification: affinity purified by Protein A		
Concentration: 1mg/ml		
Storage: 0.01M TBS (pH7.4) with 1% BSA, 0.02% Proclin300 and 50% Glycerol. Shipped at 4°C. Store at -20°C for one year. Avoid repeated freeze/thaw cycles.		
Background: This gene encodes a beta tubulin protein. This protein forms a dimer with alpha tubulin and acts as a structural component of microtubules. Mutations in this gene cause cortical dysplasia, complex, with other brain malformations 6. Alternative splicing results in multiple splice variants. There are multiple pseudogenes for this gene on chromosomes 1, 6, 7, 8, 9, and 13. [provided by RefSeq, Jun 2014]		

— VALIDATION IMAGES —

Sample: Lane 1: Mouse Cerebrum tissue lysates
 Lane 2: Rat Cerebrum tissue lysates Lane 3:
 Human U251 cell lysates Lane 4: Human HeLa
 cell lysates Lane 5: Human 293T cell lysates
 Primary: Anti-beta Tubulin (bsm-52290R) at
 1/20000 dilution Secondary: IRDye800CW Goat
 Anti-Rabbit IgG at 1/20000 dilution Predicted
 band size: 50 kDa Observed band size: 50 kDa



Paraformaldehyde-fixed, paraffin embedded
 Human Breast Cancer; Antigen retrieval by
 boiling in sodium citrate buffer (pH6.0) for 15
 min; Antibody incubation with beta Tubulin
 Monoclonal Antibody,
 Unconjugated(bsm-52290R) at 1:200 overnight
 at 4°C, followed by conjugation to the SP
 Kit(Rabbit, SP-0023) and DAB (C-0010) staining.



Paraformaldehyde-fixed, paraffin embedded
 Human Cerebellum; Antigen retrieval by boiling
 in sodium citrate buffer (pH6.0) for 15 min;
 Antibody incubation with beta Tubulin
 Monoclonal Antibody,
 Unconjugated(bsm-52290R) at 1:200 overnight
 at 4°C, followed by conjugation to the SP
 Kit(Rabbit, SP-0023) and DAB (C-0010) staining.

— SELECTED CITATIONS —

- **[IF=5.139]** Yingying Che. et al. Splicing factor SRSF3 promotes the progression of cervical cancer through regulating DDX5. MOL CARCINOGEN. 2022 Oct;; WB ;Human. 36282044