

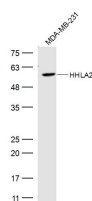
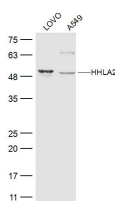
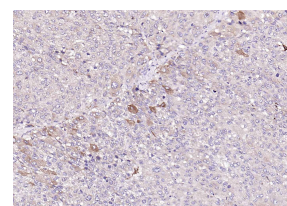
**bs-8419R****[ Primary Antibody ]****Bioss**  
ANTIBODIES

www.bioss.com.cn

sales@bioss.com.cn

techsupport@bioss.com.cn

400-901-9800

**HHLA2 Rabbit pAb****— DATASHEET —****Host:** Rabbit**Isotype:** IgG**Clonality:** Polyclonal**GeneID:** 11148**SWISS:** Q9UM44**Target:** HHLA2**Immunogen:** KLH conjugated synthetic peptide derived from human HHLA2: 231-330/414.**Purification:** affinity purified by Protein A**Concentration:** 1mg/ml**Storage:** 0.01M TBS (pH7.4) with 1% BSA, 0.02% Proclin300 and 50% Glycerol.  
Shipped at 4°C. Store at -20°C for one year. Avoid repeated freeze/thaw cycles.**Background:** Human endogenous retroviruses (HERVs) are repetitive elements that are derived from ancient germline retroviral infections. Due to their ability to move and insert next to certain genes and alter expression patterns, HERVs have been linked to several chronic diseases such as nervous systemic diseases, cancer, autoimmune and connective tissue diseases. The HERV-H family is the most abundant HERV family and has been implicated in the expression of a variety of adjacent genes. Proteins belonging to the HERV-H family are divided into one major and two minor groups based on sequence divergence. As a member of the HERV-H family, HHLA2 (HERV-H LTR-associating protein 2) is a 414 amino acid single-pass type I membrane protein that contains one Ig-like C1-type (immunoglobulin-like) domain and two Ig-like V-type (immunoglobulin-like) domains. HHLA2 is primarily expressed in kidney, lung and intestinal tissues.**Applications:** **WB** (1:500-2000)  
**IHC-P** (1:100-500)  
**IHC-F** (1:100-500)  
**IF** (1:50-200)**Reactivity:** Human**Predicted MW.:** 45 kDa**Subcellular Location:** Cell membrane**— VALIDATION IMAGES —**Sample: MDA-MB-231(Human) Cell Lysate at 30 ug  
Primary: Anti-HHLA2 (bs-8419R) at 1/500 dilution  
Secondary: IRDye800CW Goat Anti-Rabbit IgG at 1/20000 dilution  
Predicted band size: 45 kD  
Observed band size: 60 kDSample: LOVO(Human) Cell Lysate at 30 ug  
Primary: Anti-HHLA2 (bs-8419R) at 1/500 dilution  
Secondary: IRDye800CW Goat Anti-Rabbit IgG at 1/20000 dilution  
Predicted band size: 45 kD  
Observed band size: 50kD

Paraformaldehyde-fixed, paraffin embedded (human liver carcinoma); Antigen retrieval by boiling in sodium citrate buffer (pH6.0) for 15min; Block endogenous peroxidase by 3% hydrogen peroxide for 20 minutes; Blocking buffer (normal goat serum) at 37°C for 30min; Antibody incubation with (HHLA2) Polyclonal Antibody, Unconjugated (bs-8419R) at 1:200 overnight at 4°C, followed by operating according to SP Kit(Rabbit) (sp-0023) instructions and DAB staining.