
GLCCI1 Rabbit pAb

Catalog Number: bs-8410R

Target Protein: GLCCI1

Concentration: 1mg/ml

Form: Liquid

Host: Rabbit

Clonality: Polyclonal

Isotype: IgG

Applications: WB (1:500-2000)

Reactivity: Mouse (predicted:Human, Rat, Sheep, Cow, Chicken, Dog, Horse)

Predicted MW: 58 kDa

Entrez Gene: 113263

Swiss Prot: Q86VQ1

Source: KLH conjugated synthetic peptide derived from human GLCCI1: 201-300/547.

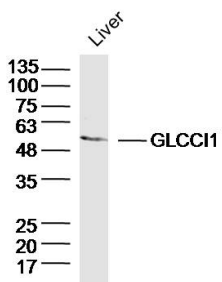
Purification: affinity purified by Protein A

Storage: 0.01M TBS (pH7.4) with 1% BSA, 0.02% Proclin300 and 50% Glycerol.

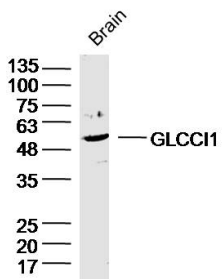
Shipped at 4°C. Store at -20°C for one year. Avoid repeated freeze/thaw cycles.

Background: GLCCI1, also known as TSSN1, GIG18 or FAM117C, is a 547 amino acid protein found in thymus and CD4(+)CD8(+) cells during specific stages of spermatogenesis in testis. Subject to phosphorylation, GLCCI1 is encoded by a gene located on human chromosome 7, which houses over 1,000 genes and comprises nearly 5% of the human genome. Chromosome 7 has been linked to Osteogenesis imperfecta, Pendred syndrome, Lissencephaly, Citrullinemia and Shwachman-Diamond syndrome. The deletion of a portion of the q arm of chromosome 7 is associated with Williams-Beuren syndrome, a condition characterized by mild mental retardation, an unusual comfort and friendliness with strangers and an elfin appearance. Deletions of portions of the q arm of chromosome 7 are also seen in a number of myeloid disorders including cases of acute myelogenous leukemia and myelodysplasia.

VALIDATION IMAGES



Sample:Liver (Mouse) Lysate at 40 ug Primary: Anti-GLCCI1 (bs-8410R)at 1/300 dilution Secondary: IRDye800CW Goat Anti-Rabbit IgG at 1/20000 dilution Predicted band size: 58kD Observed band size: 58kD



Sample:Brain (Mouse) Lysate at 40 ug Primary: Anti-GLCCI1 (bs-8410R)at 1/300 dilution Secondary: IRDye800CW Goat Anti-Rabbit IgG at 1/20000 dilution Predicted band size: 58kD Observed band size: 58kD