

bs-8406R**[Primary Antibody]****GFRAL Rabbit pAb****BioSS**
ANTIBODIES

www.bioss.com.cn

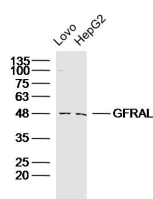
sales@bioss.com.cn

techsupport@bioss.com.cn

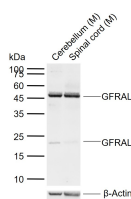
400-901-9800

— DATASHEET —

Host: Rabbit	Isotype: IgG	Applications: WB (1:500-2000)
Clonality: Polyclonal		Reactivity: Human, Mouse (predicted: Rat, Rabbit, Horse)
GeneID: 389400	SWISS: Q6UXV0	
Target: GFRAL		Predicted MW.: 42 kDa
Immunogen: KLH conjugated synthetic peptide derived from human GFRAL: 151-250/394.		Subcellular Location: Cell membrane
Purification: affinity purified by Protein A		
Concentration: 1mg/ml		
Storage: 0.01M TBS (pH7.4) with 1% BSA, 0.02% Proclin300 and 50% Glycerol. Shipped at 4°C. Store at -20°C for one year. Avoid repeated freeze/thaw cycles.		

— VALIDATION IMAGES —

Sample: Lovo Cell (Human) Lysate at 30 ug
HepG2 Cell(Human)Lysate at 30 ug Primary:
Anti- GFRAL (bs-8406R)at 1/300 dilution
Secondary: IRDye800CW Goat Anti-Rabbit IgG at
1/20000 dilution Predicted band size: 42kD
Observed band size: 47kD



Sample: Lane 1: Mouse Cerebellum tissue lysates
Lane 2: Mouse Spinal cord tissue lysates Primary:
Anti-GFRAL (bs-8406R) at 1/500 dilution
Secondary: IRDye800CW Goat Anti-Rabbit IgG at
1/20000 dilution Predicted band size: 42 kDa
Observed band size: 47,23 kDa

— SELECTED CITATIONS —

- **[IF=3.011]** Yuki Iwata. et al. Treatment with GDF15, a TGFβ superfamily protein, induces protective effect on retinal ganglion cells. Exp Eye Res. 2021 Jan;202:108338 WB,IHC ;Mouse. 33157126