

bs-23296R**[Primary Antibody]****B7-1/CD80 Rabbit pAb****Bioss**
ANTIBODIES

www.bioss.com.cn

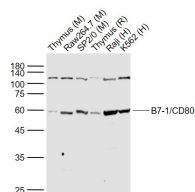
sales@bioss.com.cn

techsupport@bioss.com.cn

400-901-9800

— DATASHEET —

Host: Rabbit	Isotype: IgG	Applications: WB (1:500-1000)
Clonality: Polyclonal		Reactivity: Mouse, Rat
GeneID: 12519	SWISS: Q00609	
Target: B7-1/CD80		
Immunogen: KLH conjugated synthetic peptide derived from mouse B7-1/CD80: 1-100/306. < Extracellular >		Predicted MW.: 32 kDa
Purification: affinity purified by Protein A		Subcellular Location: Cell membrane
Concentration: 1mg/ml		
Storage: 0.01M TBS (pH7.4) with 1% BSA, 0.02% Proclin300 and 50% Glycerol. Shipped at 4°C. Store at -20°C for one year. Avoid repeated freeze/thaw cycles.		
Background: CD80 is a member of the Ig superfamily and serves as the ligand for two T cell molecules, CD28 and CTLA4. Interactions between CD28 and CD80 on activated B cells result in enhanced T cell activation. CD80 is rapidly induced on the surface of in vitro activated B cells, Epstein Barr Virus (EBV) transformed B cell lines, Burkitts lymphoma cell lines, freshly isolated follicular B lymphoma cells, T cells, and monocytes. It is also expressed at high levels in dendritic cells. It reacts weakly with a small proportion of non activated normal B cells and with HTLV1 infected T cells. CD80 does not react with peripheral monocytes, resting and activated normal T cells, T cell lines and T cell clones, nor with myelomonocytic cell lines.		

— VALIDATION IMAGES —

Sample: Lane 1: Thymus (Mouse) Lysate at 40 ug
 Lane 2: Raw264.7 (Mouse) Cell Lysate at 30 ug
 Lane 3: SP2/0 (Mouse) Cell Lysate at 30 ug Lane
 4: Thymus (Rat) Lysate at 40 ug Lane 5: Raji
 (Human) Cell Lysate at 30 ug Lane 6: K562
 (Human) Cell Lysate at 30 ug Primary: Anti-
 B7-1/CD80 (bs-23296R) at 1/1000 dilution
 Secondary: IRDye800CW Goat Anti-Rabbit IgG at
 1/20000 dilution Predicted band size: 60-65 kD
 Observed band size: 60 kD