

**bsm-0957M****[ Primary Antibody ]****PAG608 (3E4) Mouse mAb****BioSS**  
ANTIBODIES

www.bioss.com.cn

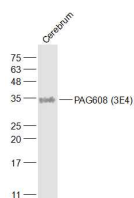
sales@bioss.com.cn

techsupport@bioss.com.cn

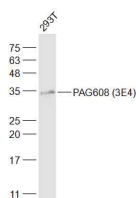
400-901-9800

**— DATASHEET —**

<b>Host:</b> Mouse	<b>Isotype:</b> IgG1	<b>Applications:</b> WB (1:500-2000)
<b>Clonality:</b> Monoclonal	<b>CloneNo.:</b> 3E4	
<b>GeneID:</b> 64393	<b>SWISS:</b> Q9HA38	
<b>Target:</b> PAG608 (3E4)		
<b>Immunogen:</b> KLH conjugated synthetic peptide derived from human WIG-1/PAG608: 51-150/289.		
<b>Purification:</b> affinity purified by Protein A		<b>Reactivity:</b> Human, Rat (predicted: Mouse, Pig, Cow, Chicken, Dog, GuineaPig, Horse)
<b>Concentration:</b> 1mg/ml		
<b>Storage:</b> Size : 50ul/100ul/200ul 0.01M TBS (pH7.4) with 1% BSA, 0.02% Proclin300 and 50% Glycerol. Size : 200ug (PBS only) 0.01M PBS Shipped at 4°C. Store at -20°C for one year. Avoid repeated freeze/thaw cycles.		
<b>Background:</b> This gene encodes a protein containing three zinc finger domains and a nuclear localization signal. The mRNA and the protein of this gene are upregulated by wildtype p53 and overexpression of this gene inhibits tumor cell growth, suggesting that this gene may have a role in the p53-dependent growth regulatory pathway. Alternative splicing of this gene results in two transcript variants encoding two isoforms differing in only one amino acid.		
		<b>Predicted MW.:</b> 32 kDa
		<b>Subcellular Location:</b> Nucleus

**— VALIDATION IMAGES —**

Sample: Cerebrum (Rat) Lysate at 40 ug  
Primary: Anti-PAG608 (3E4) (bsm-0957M) at 1/1000  
dilution Secondary: IRDye800CW Goat Anti-Mouse IgG at 1/20000 dilution  
Predicted band size: 32 kD Observed band size: 34 kD



Sample: 293T (Human) Cell Lysate at 30 ug  
Primary: Anti-PAG608 (3E4) (bsm-0957M) at 1/1000 dilution  
Secondary: IRDye800CW Goat Anti-Mouse IgG at 1/20000 dilution  
Predicted band size: 32 kD Observed band size: 34 kD