

**bs-18283R****[ Primary Antibody ]****LIN9 Rabbit pAb****BioSS**  
ANTIBODIES

www.bioss.com.cn

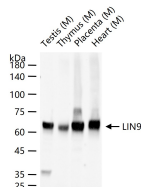
sales@bioss.com.cn

techsupport@bioss.com.cn

400-901-9800

**— DATASHEET —**

<b>Host:</b> Rabbit	<b>Isotype:</b> IgG	<b>Applications:</b> <b>WB</b> (1:500-2000) <b>ELISA</b> (1:5000-10000)
<b>Clonality:</b> Polyclonal		
<b>GeneID:</b> 286826	<b>SWISS:</b> Q5TKA1	
<b>Target:</b> LIN9		
<b>Purification:</b> affinity purified by Protein A		
<b>Concentration:</b> 1mg/ml		
<b>Storage:</b> 0.01M TBS (pH7.4) with 1% BSA, 0.02% Proclin300 and 50% Glycerol. Shipped at 4°C. Store at -20°C for one year. Avoid repeated freeze/thaw cycles.		<b>Reactivity:</b> Mouse
<b>Background:</b> This gene encodes a tumor suppressor protein that inhibits DNA synthesis and oncogenic transformation through association with the retinoblastoma 1 protein. The encoded protein also interacts with a complex of other cell cycle regulators to repress cell cycle-dependent gene expression in non-dividing cells. Alternatively spliced transcript variants encoding multiple isoforms have been observed for this gene. [provided by RefSeq, Jul 2012]		<b>Predicted MW.:</b> 62 kDa
		<b>Subcellular Location:</b> Nucleus

**— VALIDATION IMAGES —**

25 ug total protein per lane of various lysates (see on figure) probed with LIN9 polyclonal antibody, unconjugated (bs-18283R) at 1:1000 dilution and 4°C overnight incubation. Followed by conjugated secondary antibody incubation at r.t. for 60 min.