

bs-7461R**[Primary Antibody]****STP2 Rabbit pAb****Bioss**
ANTIBODIES

www.bioss.com.cn

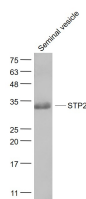
sales@bioss.com.cn

techsupport@bioss.com.cn

400-901-9800

— DATASHEET —

Host: Rabbit	Isotype: IgG	Applications: WB (1:500-2000)
Clonality: Polyclonal		Reactivity: Mouse (predicted: Human)
GeneID: 7142	SWISS: Q05952	
Target: STP2		
Immunogen: KLH conjugated synthetic peptide derived from human STP2: 221-295/295.		Predicted MW.: 34 kDa
Purification: affinity purified by Protein A		Subcellular Location: Nucleus
Concentration: 1mg/ml		
Storage: 0.01M TBS (pH7.4) with 1% BSA, 0.02% Proclin300 and 50% Glycerol. Shipped at 4°C. Store at -20°C for one year. Avoid repeated freeze/thaw cycles.		
Background: In the elongating spermatids of mammals, the conversion of nucleosomal chromatin to the compact, nonnucleosomal form found in the sperm nucleus is associated with the appearance of a small set of basic chromosomal transition proteins. These are known as nuclear transition proteins. These proteins are located in the nucleus and are highly expressed in the testis. Belongs to the nuclear transition protein 2 family.		

— VALIDATION IMAGES —

Sample: Seminal vesicle(Mouse) Lysate at 40 ug
Primary: Anti- STP2 (bs-7461R) at 1/1000 dilution
Secondary: IRDye800CW Goat Anti-Rabbit IgG at 1/20000 dilution Predicted band size: 34 kD
Observed band size: 34 kD