

bs-12437R**[Primary Antibody]****Inversin Rabbit pAb****BioSS**
ANTIBODIES

www.bioss.com.cn

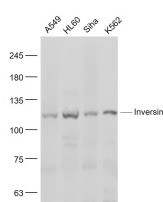
sales@bioss.com.cn

techsupport@bioss.com.cn

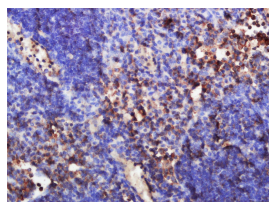
400-901-9800

— DATASHEET —

Host: Rabbit	Isotype: IgG	Applications: WB (1:500-2000)
Clonality: Polyclonal		IHC-P (1:100-500)
GeneID: 27130	SWISS: Q9Y283	IHC-F (1:100-500)
Target: Inversin		IF (1:100-500)
Immunogen: KLH conjugated synthetic peptide derived from human Inversin/Nephrocystin 2: 31-130/1065.		Reactivity: Human, Mouse (predicted: Rat, Sheep, Cow, Chimpanzee)
Purification: affinity purified by Protein A		
Concentration: 1mg/ml		Predicted MW.: 118 kDa
Storage: 0.01M TBS (pH7.4) with 1% BSA, 0.02% Proclin300 and 50% Glycerol. Shipped at 4°C. Store at -20°C for one year. Avoid repeated freeze/thaw cycles.		Subcellular Location: Cell membrane ,Cytoplasm
Background: Nephrocystin-2 is a 1,065 amino acid protein that exists as three alternatively spliced isoforms and is essential for establishment of the left-right axis and normal renal development. Localizing to the cytoplasm, cytoskeleton, membrane and nucleus, nephrocystin-2 is expressed during presomite-stage embryos and persists in adulthood, with high levels of expression in liver and kidney. Mice expressing nephrocystin-2 mutations are primarily generated by random insertional mutagenesis and result in the reversal of left/right polarity and cyst formation in the kidneys. Furthermore, altered nephrocystin-2 function reverses nodal and lefty expression, indicating that nephrocystin-2 signaling occurs upstream of these proteins involved in the development of asymmetry.		

— VALIDATION IMAGES —

Sample: A549(Human) Cell Lysate at 30 ug
HL60(Human) Cell Lysate at 30 ug SiHa(Human)
Cell Lysate at 30 ug K562(Human) Cell Lysate at
30 ug Primary: Anti- Inversin (bs-12437R) at
1/1000 dilution Secondary: IRDye800CW Goat
Anti-Rabbit IgG at 1/20000 dilution Predicted
band size: 118 kD Observed band size: 118 kD



Tissue/cell: mouse lymph nodes; 4%
Paraformaldehyde-fixed and paraffin-
embedded; Antigen retrieval: citrate buffer (
0.01M, pH 6.0), Boiling bathing for 15min; Block
endogenous peroxidase by 3% Hydrogen
peroxide for 30min; Blocking buffer (normal goat
serum,C-0005) at 37°C for 20 min; Incubation:
Anti-Inversin Polyclonal Antibody,
Unconjugated(bs-12437R) 1:500, overnight at
4°C, followed by conjugation to the secondary
antibody(SP-0023) and DAB(C-0010) staining