

bs-19988R

[Primary Antibody]

PPME1 Rabbit pAb

BioSS
ANTIBODIES

www.bioss.com.cn

sales@bioss.com.cn

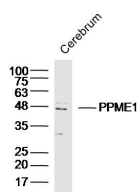
techsupport@bioss.com.cn

400-901-9800

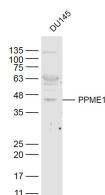
— DATASHEET —

Host: Rabbit	Isotype: IgG	Applications: WB (1:500-2000)
Clonality: Polyclonal		Reactivity: Human, Mouse (predicted: Rat, Rabbit, Sheep, Cow, Dog, Horse)
GeneID: 51400	SWISS: Q9Y570	Predicted MW.: 42 kDa
Target: PPME1		Subcellular Location: Cytoplasm
Immunogen: KLH conjugated synthetic peptide derived from human PPME1: 151-250/386.		
Purification: affinity purified by Protein A		
Concentration: 1mg/ml		
Storage: 0.01M TBS (pH7.4) with 1% BSA, 0.02% Proclin300 and 50% Glycerol. Shipped at 4°C. Store at -20°C for one year. Avoid repeated freeze/thaw cycles.		
Background: This gene encodes a protein phosphatase methylesterase localized to the nucleus. The encoded protein acts on the protein phosphatase-2A catalytic subunit and supports the ERK pathway through dephosphorylation of regulatory proteins. It plays a role in malignant glioma progression. Alternative splicing results in multiple transcript variants. [provided by RefSeq, Oct 2012]		

— VALIDATION IMAGES —



Sample: Cerebrum (Mouse) Lysate at 40 ug
Primary: Anti-PPME1 (bs-19988R) at 1/300
dilution Secondary: IRDye800CW Goat Anti-
Rabbit IgG at 1/20000 dilution Predicted band
size: 42kD Observed band size: 42kD



Sample: DU145 (Human) Cell Lysate at 40 ug
Primary: Anti-PPME1 (bs-19988R) at 1/300
dilution Secondary: IRDye800CW Goat Anti-
Rabbit IgG at 1/20000 dilution Predicted band
size: 42 kD Observed band size: 42 kD