

**bs-19976R****[ Primary Antibody ]****Bioss**  
ANTIBODIES

www.bioss.com.cn

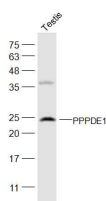
sales@bioss.com.cn

techsupport@bioss.com.cn

400-901-9800

**PPPDE1/FAM152A Rabbit pAb****— DATASHEET —**

|  |                      |   |
|--|----------------------|---|
| <b>Host:</b> Rabbit  | <b>Isotype:</b> IgG  | <b>Applications:</b> WB (1:500-2000)  |
| <b>Clonality:</b> Polyclonal   |                      | <b>Reactivity:</b> Mouse (predicted: Human, Rat, Rabbit, Pig, Sheep, Cow, Dog, Horse) |
| <b>GeneID:</b> 51029   | <b>SWISS:</b> Q9BSY9 |   |
| <b>Target:</b> PPPDE1/FAM152A  |                      | <b>Predicted MW.:</b> 21 kDa  |
| <b>Immunogen:</b> KLH conjugated synthetic peptide derived from human PPPDE1/FAM152A: 21-100/194.  |                      | <b>Subcellular Location:</b> Cytoplasm  |
| <b>Purification:</b> affinity purified by Protein A  |                      |   |
| <b>Concentration:</b> 1mg/ml   |                      |   |
| <b>Storage:</b> 0.01M TBS (pH7.4) with 1% BSA, 0.02% Proclin300 and 50% Glycerol.<br>Shipped at 4°C. Store at -20°C for one year. Avoid repeated freeze/thaw cycles. |                      |   |

**— VALIDATION IMAGES —**

Sample: Testis (Mouse) Lysate at 40 ug Primary:  
Anti-PPPDE1 (bs-19976R) at 1/300 dilution  
Secondary: IRDye800CW Goat Anti-Rabbit IgG at  
1/20000 dilution Predicted band size: 23 kD  
Observed band size: 23 kD

**— SELECTED CITATIONS —**

- **[IF=1.935]** Ou X et al. Desumoylating Isopeptidase 2 (DESI2) Inhibits Proliferation and Promotes Apoptosis of Pancreatic Cancer Cells through Regulating PI3K/AKT/mTOR Signaling Pathway. (2018)Pathol. Oncol. Res. Nov 8. WB ;Human. 30411297