

bs-19970R**[Primary Antibody]****BioSS**
ANTIBODIES

www.bioss.com.cn

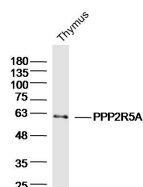
sales@bioss.com.cn

techsupport@bioss.com.cn

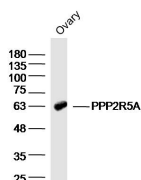
400-901-9800

PPP2R5A Rabbit pAb**— DATASHEET —**

| | | |
|---|----------------------|---|
| Host: Rabbit | Isotype: IgG | Applications: WB (1:500-2000) |
| Clonality: Polyclonal | | Reactivity: Mouse (predicted: Human, Rat, Rabbit, Pig, Cow, Horse) |
| GeneID: 5525 | SWISS: Q15172 | Predicted MW.: 56 kDa |
| Target: PPP2R5A | | Subcellular Location: Cytoplasm ,Nucleus |
| Immunogen: KLH conjugated synthetic peptide derived from human PPP2R5A: 301-400/486. | | |
| Purification: affinity purified by Protein A | | |
| Concentration: 1mg/ml | | |
| Storage: 0.01M TBS (pH7.4) with 1% BSA, 0.02% Proclin300 and 50% Glycerol. Shipped at 4°C. Store at -20°C for one year. Avoid repeated freeze/thaw cycles. | | |
| Background: The product of this gene belongs to the phosphatase 2A regulatory subunit B family. Protein phosphatase 2A is one of the four major Ser/Thr phosphatases, and it is implicated in the negative control of cell growth and division. It consists of a common heteromeric core enzyme, which is composed of a catalytic subunit and a constant regulatory subunit, that associates with a variety of regulatory subunits. The B regulatory subunit might modulate substrate selectivity and catalytic activity. This gene encodes an alpha isoform of the regulatory subunit B56 subfamily. Alternative transcript variants encoding distinct isoforms have been found for this gene. [provided by RefSeq, Dec 2010] | | |

— VALIDATION IMAGES —

Sample:Thymus (Mouse) Lysate at 40 ug
Primary: Anti-PPP2R5A(bs-19970R)at 1/300
dilution Secondary: IRDye800CW Goat Anti-
Rabbit IgG at 1/20000 dilution Predicted band
size: 56kD Observed band size: 60kD



Sample:Ovary (Mouse) Lysate at 40 ug Primary:
Anti-PPP2R5A(bs-19970R)at 1/300 dilution
Secondary: IRDye800CW Goat Anti-Rabbit IgG at
1/20000 dilution Predicted band size: 56kD
Observed band size: 63kD