

bs-11250R**[Primary Antibody]**

www.bioss.com.cn

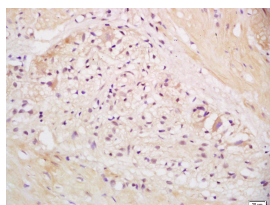
sales@bioss.com.cn

techsupport@bioss.com.cn

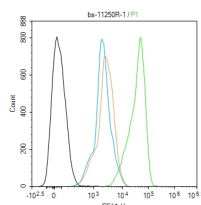
400-901-9800

EEA1 Rabbit pAb**— DATASHEET —**

Host: Rabbit Clonality: Polyclonal GeneID: 8411 Target: EEA1 Immunogen: KLH conjugated synthetic peptide derived from human EEA1: 1251-1350/1411. Purification: affinity purified by Protein A Concentration: 1mg/ml Storage: 0.01M TBS (pH7.4) with 1% BSA, 0.02% Proclin300 and 50% Glycerol. Shipped at 4°C. Store at -20°C for one year. Avoid repeated freeze/thaw cycles. Background: Early endosomes are cytoplasmic compartments that function in receiving and sorting endocytosed proteins for vesicular transport. EEA1 (early endosome antigen 1) is a peripheral membrane protein that co-localizes with the transferrin receptor and Rab5 on early endosomes. EEA1 contains a calmodulin-binding IQ motif and cysteine rich finger motif necessary for its specific localization to the early endosomes. EEA1 has sequence homology to several yeast proteins that have been implicated in membrane trafficking, including Vps27, Fab1 and Vac1. Evidence suggests a possible role for EEA1 in mediating the regulatory effects of 3'-phosphoinositides on membrane trafficking.	Isotype: IgG SWISS: Q15075	Applications: IHC-P (1:100-500) IHC-F (1:100-500) IF (1:100-500) Flow-Cyt (1ug/Test) Reactivity: Human (predicted: Mouse, Rat, Cow, Dog, Hamster) Predicted MW.: 162 kDa Subcellular Location: Cell membrane ,Cytoplasm
--	---	---

— VALIDATION IMAGES —

Tissue/cell: human stomach tissue; 4% Paraformaldehyde-fixed and paraffin-embedded; Antigen retrieval: citrate buffer (0.01M, pH 6.0), Boiling bathing for 15min; Block endogenous peroxidase by 3% Hydrogen peroxide for 30min; Blocking buffer (normal goat serum, C-0005) at 37°C for 20 min; Incubation: Anti-EEA1 Polyclonal Antibody, Unconjugated (bs-11250R) 1:200, overnight at 4°C, followed by conjugation to the secondary antibody (SP-0023) and DAB (C-0010) staining



Blank control (black line) :Hela. Primary Antibody (green line): Rabbit Anti-EEA1 antibody (bs-11250R) Dilution:1ug/Test; Secondary Antibody (white blue line) : Goat anti-rabbit IgG-AF488 Dilution: 0.5ug/Test. Isotype control (orange line) : Normal Rabbit IgG Protocol The cells were fixed with 4% PFA (10min at room temperature) and then permeabilized with 90% ice-cold methanol for 20 min at -20°C. The cells were then incubated in 5% BSA to block non-specific protein-protein interactions for 30 min at room temperature. Cells stained with Primary Antibody for 30 min at room temperature. The secondary antibody used for 40 min at room temperature. Acquisition of 20,000 events was performed.

— SELECTED CITATIONS —

- **[IF=22.096]** Zhu, Fangrui. et al. The neuropeptide CGRP enters the macrophage cytosol to suppress the NLRP3 inflammasome during pulmonary infection. CELL MOL IMMUNOL. 2023 Jan;;1-13 WB ;Mouse. 36600053

Important Note: This product as supplied is intended for research use only, not for use in human, therapeutic or diagnostic applications.