

bs-11233R**[Primary Antibody]****RPA70 Rabbit pAb****BioSS**
ANTIBODIES

www.bioss.com.cn

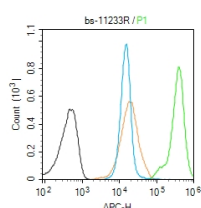
sales@bioss.com.cn

techsupport@bioss.com.cn

400-901-9800

— DATASHEET —

Host: Rabbit Clonality: Polyclonal GeneID: 6117 Target: RPA70 Immunogen: KLH conjugated synthetic peptide derived from human RPA70: 201-300/616. Purification: affinity purified by Protein A Concentration: 1mg/ml Storage: 0.01M TBS (pH7.4) with 1% BSA, 0.02% Proclin300 and 50% Glycerol. Shipped at 4°C. Store at -20°C for one year. Avoid repeated freeze/thaw cycles. Background: The single-stranded-DNA-binding proteins (SSBs) are essential for DNA function in prokaryotic and eukaryotic cells, mitochondria, phages and viruses. Replication protein A (RPA), a highly conserved eukaryotic protein, is a heterotrimeric SSB. RPA plays an important role in DNA replication, recombination and repair. The binding of human RPA (hRPA) to DNA involves molecular polarity in which initial hRPA binding occurs on the 5' side of an ssDNA substrate and then extends in the 3' direction to create a stably bound hRPA. RPA is a major damage-recognition protein involved in the early stages of nucleotide excision repair. It can also play a role in telomere maintenance. The RPA 70 kDa subunit binds to ssDNA and mediates interactions with many cellular and viral proteins. The DNA binding domain lies in the middle of RPA 70 kDa subunit and comprises two structurally homologous subdomains oriented in tandem. RPA contains a conserved four cysteine-type zinc-finger motif, which mediates the transition of RPA-ssDNA interaction to a stable RPA-ssDNA complex in a redox-dependent manner.	Isotype: IgG SWISS: P27694	Applications: Flow-Cyt (1ug/Test) Reactivity: Human (predicted: Mouse, Rat, Rabbit, Pig, Dog) Predicted MW.: 68 kDa Subcellular Location: Nucleus
--	---	--

— VALIDATION IMAGES —

Blank control (Black line): Molt4 (Black). Primary Antibody (green line): Rabbit Anti-RPA70 antibody (bs-11233R) Dilution: 1µg / 10⁶ cells; Isotype Control Antibody (orange line): Rabbit IgG . Secondary Antibody (white blue line): Goat anti-rabbit IgG-AF647 Dilution: 1µg / test. Protocol The cells were fixed with 4% PFA (10min at room temperature) and then permeabilized with 90% ice-cold methanol for 20 min at room temperature. The cells were then incubated in 5%BSA to block non-specific protein-protein interactions for 30 min at room temperature .Cells stained with Primary Antibody for 30 min at room temperature. The secondary antibody used for 40 min at room temperature. Acquisition of 20,000 events was performed.