

---

## Claudin 5 Rabbit pAb

Catalog Number: bs-10296R

Target Protein: Claudin 5

Concentration: 1mg/ml

Form: Liquid

Host: Rabbit

Clonality: Polyclonal

Isotype: IgG

Applications: WB (1:500-2000), IHC-P (1:100-500), IHC-F (1:100-500), IF (1:100-500), Flow-Cyt (2ug/Test)

Reactivity: Human, Mouse (predicted:Rat, Rabbit, Pig, Sheep, Cow, Horse)

Predicted MW: 23 kDa

Subcellular: Extracellular matrix ,Cell membrane

Locations:

Entrez Gene: 7122

Swiss Prot: O00501

Source: KLH conjugated synthetic peptide derived from human Claudin 5: 29-81/218.

Purification: affinity purified by Protein A

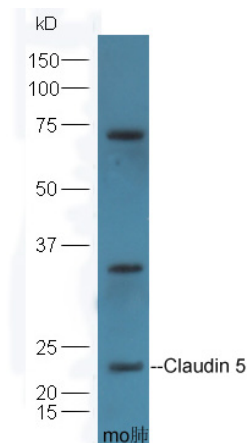
Storage: 0.01M TBS (pH7.4) with 1% BSA, 0.02% Proclin300 and 50% Glycerol.

Shipped at 4°C. Store at -20°C for one year. Avoid repeated freeze/thaw cycles.

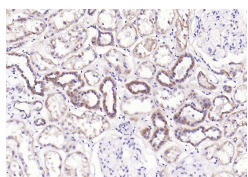
**Background:** This gene encodes a member of the claudin family. Claudins are integral membrane proteins and components of tight junction strands. Tight junction strands serve as a physical barrier to prevent solutes and water from passing freely through the paracellular space between epithelial or endothelial cell sheets. Mutations in this gene have been found in patients with velocardiofacial syndrome. Alternatively spliced transcript variants encoding the same protein have been found for this gene. [provided by RefSeq, Aug 2008]

### VALIDATION IMAGES

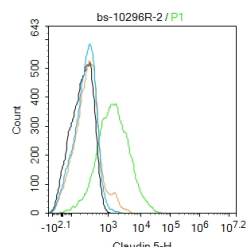
---



Protein: lung(mouse) lysates at 45ug; Primary: Anti-Claudin 5 (bs-10296R) at 1:300; Secondary: HRP conjugated Goat-Anti-Rabbit IgG(bse-0295G-HRP) at 1: 5000; ECL excited the fluorescence; Predicted band size :23 kD Observed band size :23kD



Paraformaldehyde-fixed, paraffin embedded (Human kidney); Antigen retrieval by boiling in sodium citrate buffer (pH6.0) for 15min; Block endogenous peroxidase by 3% hydrogen peroxide for 20 minutes; Blocking buffer (normal goat serum) at 37°C for 30min; Antibody incubation with (Claudin 5) Polyclonal Antibody, Unconjugated (bs-10296R) at 1:200 overnight at 4°C, followed by operating according to SP Kit(Rabbit) (sp-0023) instructions and DAB staining.



Blank control: K562. Primary Antibody (green line): Rabbit Anti-Claudin 5 antibody (bs-10296R) Dilution: 2µg / 10<sup>6</sup> cells; Isotype Control Antibody (orange line): Rabbit IgG . Secondary Antibody : Goat anti-rabbit IgG-FITC Dilution: 0.5µg / test. Protocol The cells were incubated in 5%BSA to block non-specific protein-protein interactions for 30 min at room temperature .Cells stained with Primary Antibody for 30 min at room temperature. The secondary antibody used for 40 min at room temperature. Acquisition of 20,000 events was performed.

## PRODUCT SPECIFIC PUBLICATIONS

[IF=13.903] Tang Y et al. Overcoming the Reticuloendothelial System Barrier to Drug Delivery with a "Don't-Eat-Us" Strategy. ACS Nano. 2019 Nov 5. ICC ; Mouse . 31689086

[IF=11.4] Xin-yu Zhu. et al. CD34+CLDN5+ tumor associated senescent endothelial cells through IGF2-IGF2R signaling increased cholangiocellular phenotype in hepatocellular carcinoma. J ADV RES. 2024 Dec;; FC ; Rat,Human . 39674501

[IF=10.19] Xianqiang Li. et al. Menthol nanoliposomes enhanced anti-tumor immunotherapy by increasing lymph node homing of dendritic cell vaccines. CLIN IMMUNOL. 2022 Sep;;109119 WB ; Mouse . 36109005

[IF=5.714] Yingxue Li. et al. ProBDNF signaling is involved in periodontitis-induced depression-like behavior in mouse hippocampus. INT IMMUNOPHARMACOL. 2023 Mar;116:109767 WB ; MOUSE . 36738676

[IF=5.195] Shan Luo. et al. Application of omics technology to investigate the mechanism underlying the role of San Hua Tang in regulating microglia polarization and blood-brain barrier protection following ischemic stroke. J ETHNOPHARMACOL. 2023 May;;116640 WB ; Rat . 37196812