

bs-14174R**[Primary Antibody]****Cytochrome P450 1A1 + 1A2 Rabbit pAb****BioSS**
ANTIBODIES

www.bioss.com.cn

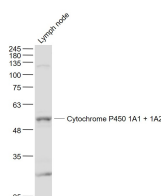
sales@bioss.com.cn

techsupport@bioss.com.cn

400-901-9800

— DATASHEET —

Host: Rabbit	Isotype: IgG	Applications: WB (1:500-2000)
Clonality: Polyclonal		Reactivity: Mouse (predicted: Human, Rat, Rabbit, Sheep, Cow, Dog)
GeneID: 1543	SWISS: P04798	
Target: Cytochrome P450 1A1 + 1A2		Predicted MW.: 58 kDa
Immunogen: KLH conjugated synthetic peptide derived from human Cytochrome P450 1A1 + 1A2: 61-160/512.		Subcellular Location: Cell membrane ,Cytoplasm
Purification: affinity purified by Protein A		
Concentration: 1mg/ml		
Storage: 0.01M TBS (pH7.4) with 1% BSA, 0.02% Proclin300 and 50% Glycerol. Shipped at 4°C. Store at -20°C for one year. Avoid repeated freeze/thaw cycles.		
Background: This gene, CYP1A1, encodes a member of the cytochrome P450 superfamily of enzymes. The cytochrome P450 proteins are monooxygenases which catalyze many reactions involved in drug metabolism and synthesis of cholesterol, steroids and other lipids. This protein localizes to the endoplasmic reticulum and its expression is induced by some polycyclic aromatic hydrocarbons (PAHs), some of which are found in cigarette smoke. The enzyme's endogenous substrate is unknown; however, it is able to metabolize some PAHs to carcinogenic intermediates. The gene has been associated with lung cancer risk. A related family member, CYP1A2, is located approximately 25 kb away from CYP1A1 on chromosome 15. [provided by RefSeq, Jul 2008]		

— VALIDATION IMAGES —

Sample: Lymph node (Mouse) Lysate at 40 ug
Primary: Anti- Cytochrome P450 1A1 + 1A2
(bs-14174R) at 1/1000 dilution Secondary:
IRDye800CW Goat Anti-Rabbit IgG at 1/20000
dilution Predicted band size: 58 kD Observed
band size: 58 kD