

**bs-14168R****[ Primary Antibody ]****CysLT1 Rabbit pAb****Bioss**  
**ANTIBODIES**

www.bioss.com.cn

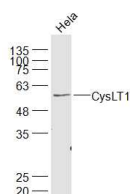
sales@bioss.com.cn

techsupport@bioss.com.cn

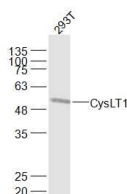
400-901-9800

**— DATASHEET —**

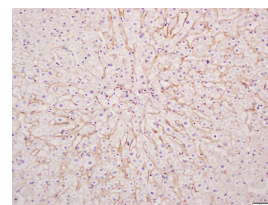
<b>Host:</b> Rabbit <b>Clonality:</b> Polyclonal <b>GeneID:</b> 10800 <b>Target:</b> CysLT1 <b>Immunogen:</b> KLH conjugated synthetic peptide derived from human CYSLTR1: 251-337/337. <b>Purification:</b> affinity purified by Protein A <b>Concentration:</b> 1mg/ml <b>Storage:</b> 0.01M TBS (pH7.4) with 1% BSA, 0.02% Proclin300 and 50% Glycerol. Shipped at 4°C. Store at -20°C for one year. Avoid repeated freeze/thaw cycles. <b>Background:</b> This gene encodes a member of the G-protein coupled receptor 1 family. The encoded protein is a receptor for cysteinyl leukotrienes, and is involved in mediating bronchoconstriction via activation of a phosphatidylinositol-calcium second messenger system. Activation of the encoded receptor results in contraction and proliferation of bronchial smooth muscle cells, eosinophil migration, and damage to the mucus layer in the lung. Upregulation of this gene is associated with asthma and dysregulation may also be implicated in cancer. Alternative splicing results in multiple transcript variants. [provided by RefSeq, Aug 2013]	<b>Isotype:</b> IgG <b>SWISS:</b> Q9Y271	<b>Applications:</b> <b>WB</b> (1:500-2000) <b>IHC-P</b> (1:100-500) <b>IHC-F</b> (1:100-500) <b>IF</b> (1:100-500) <b>Reactivity:</b> Human (predicted: Mouse, Rat, Pig, Sheep, Cow, Dog, Horse) <b>Predicted MW.:</b> 39 kDa <b>Subcellular Location:</b> Cell membrane
--	---	---

**— VALIDATION IMAGES —**

Sample: HeLa(Human) Cell Lysate at 30 ug  
 Primary: Anti-CysLT1 (bs-14168R) at 1/1000 dilution Secondary: IRDye800CW Goat Anti-Rabbit IgG at 1/20000 dilution Predicted band size: 39 kD Observed band size: 59 kD



Sample: 293T(Human) Cell Lysate at 30 ug  
 Primary: Anti-CysLT1 (bs-14168R) at 1/1000 dilution Secondary: IRDye800CW Goat Anti-Rabbit IgG at 1/20000 dilution Predicted band size: 39 kD Observed band size: 59 kD



Tissue/cell: human liver carcinoma; 4% Paraformaldehyde-fixed and paraffin-embedded; Antigen retrieval: citrate buffer (0.01M, pH 6.0), Boiling bathing for 15min; Block endogenous peroxidase by 3% Hydrogen peroxide for 30min; Blocking buffer (normal goat serum, C-0005) at 37°C for 20 min; Incubation: Anti-CysLT1 Polyclonal Antibody, Unconjugated(bs-14168R) 1:200, overnight at 4°C, followed by conjugation to the secondary antibody(SP-0023) and DAB(C-0010) staining

**— SELECTED CITATIONS —**

- **[IF=2.9]** Xiaozhen Wang. et al. Asthma aggravates alzheimer's disease by up-regulating NF-  $\kappa$ B signaling pathway through LTD4. BRAIN RES. 2023 Dec;:148711 WB ;Mouse. 38092296