

**bs-14163R**

**[ Primary Antibody ]**

## CYP4Z1 Rabbit pAb

**Bioss**  
ANTIBODIES

www.bioss.com.cn

sales@bioss.com.cn

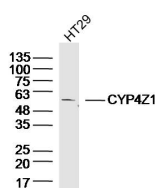
techsupport@bioss.com.cn

400-901-9800

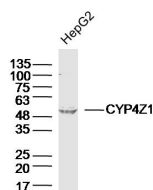
### — DATASHEET —

<b>Host:</b> Rabbit	<b>Isotype:</b> IgG	<b>Applications:</b> WB (1:500-2000)
<b>Clonality:</b> Polyclonal		<b>Reactivity:</b> Human
<b>GeneID:</b> 199974	<b>SWISS:</b> Q86W10	
<b>Target:</b> CYP4Z1		
<b>Immunogen:</b> KLH conjugated synthetic peptide derived from human CYP4Z1: 51-150/505.		<b>Predicted MW.:</b> 59 kDa
<b>Purification:</b> affinity purified by Protein A		<b>Subcellular Location:</b> Cytoplasm
<b>Concentration:</b> 1mg/ml		
<b>Storage:</b> 0.01M TBS (pH7.4) with 1% BSA, 0.02% Proclin300 and 50% Glycerol. Shipped at 4°C. Store at -20°C for one year. Avoid repeated freeze/thaw cycles.		
<b>Background:</b> This gene encodes a member of the cytochrome P450 superfamily of enzymes. The cytochrome P450 proteins are monooxygenases which catalyze many reactions involved in drug metabolism and synthesis of cholesterol, steroids and other lipids. This gene is part of a cluster of cytochrome P450 genes on chromosome 1p33. [provided by RefSeq, Jul 2008]		

### — VALIDATION IMAGES —



Sample: HT29(Human) Cell Lysate at 40 ug  
Primary: Anti-CYP4Z1(bs-14163R) at 1/300  
dilution Secondary: IRDye800CW Goat Anti-RabbitIgG at 1/20000 dilution Predicted band size: 59kD Observed band size: 59kD



Sample: HepG2 (Human)Cell Lysate at 40 ug  
Primary: Anti-CYP4Z1(bs-14163R) at 1/300  
dilution Secondary: IRDye800CW Goat Anti-RabbitIgG at 1/20000 dilution Predicted band size: 59kD Observed band size: 59kD